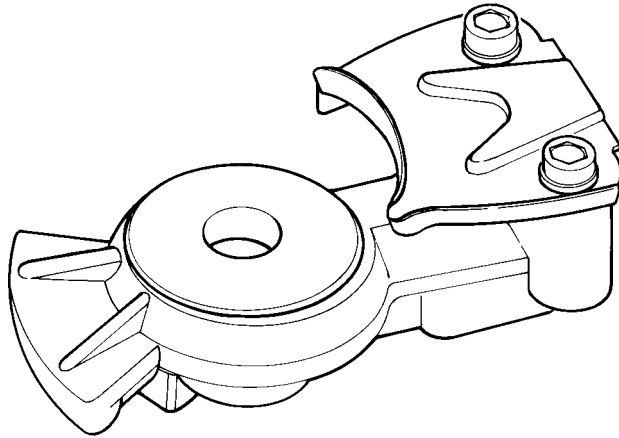


GIUNTI DI ACCOPPIAMENTO / *PALM COUPLING*

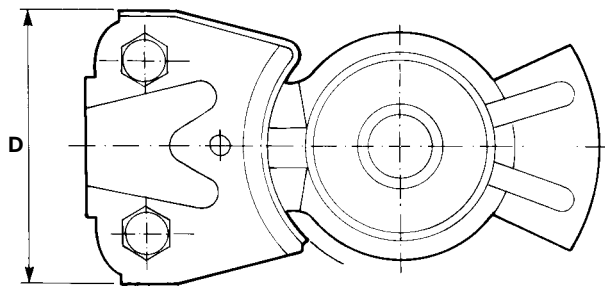
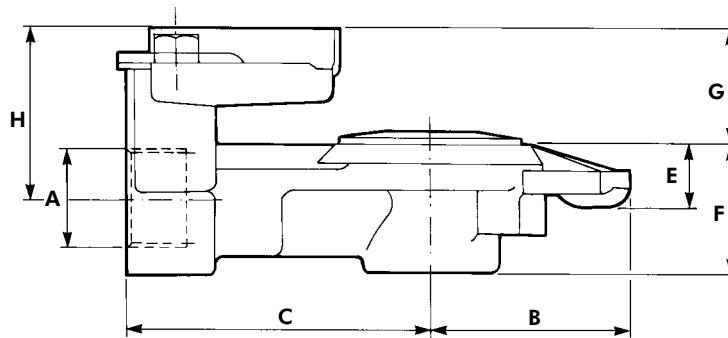
GIUNTO DI ACCOPIAMENTO PALM COUPLING

G201



CODICE CODE	CODICE CODE	CODICE CODE
G201 0000	G201 0010	G201 0020

A	M22X1.5 prof. 14	1/2" NPT prof. 18	G1/2" prof. 14.5
B	R 44		
C	68		
D	59.5		
E	14		
F	29		
G	22		
H	38		



CARATTERISTICHE DI IMPIEGO WORKING DATA

Fluido utilizzato <i>Working medium</i>	ARIA / AIR
Pressione d'esercizio <i>Operating pressure</i>	MAX 10 bar
Temperatura di impiego <i>Working temperature</i>	- 40°C+ 80°C
Massa <i>Weight</i>	Kg 0.210

GIUNTI DI ACCOPPIAMENTO (tipo CUNA) PALM COUPLING (CUNA type)

G203

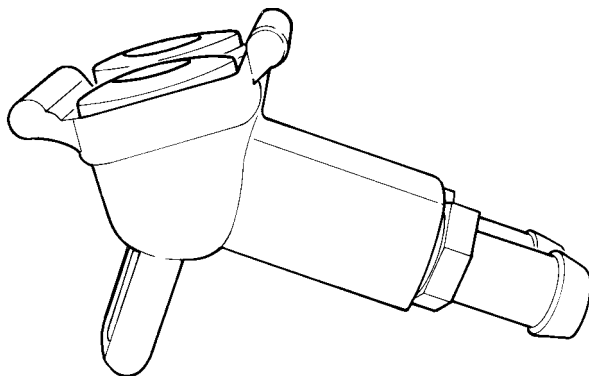
PER TRATTORE DI SEMIRIMORCHIO FOR SEMITRAILER TRACTOR

APPARECCHI CONFORMI ALLA NORMA CUNA NC. 144 - 02
IN ACCORDANCE WITH CUNA NORM NC. 144 - 02

A1 **A2**

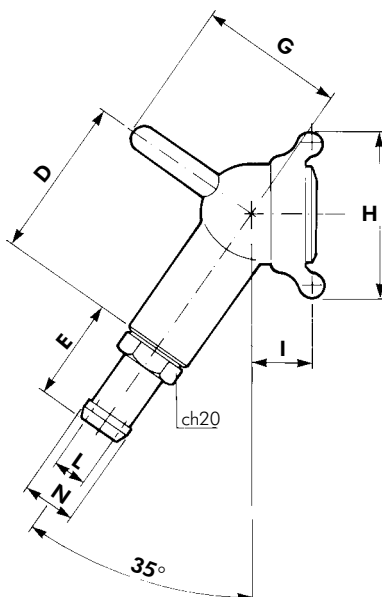
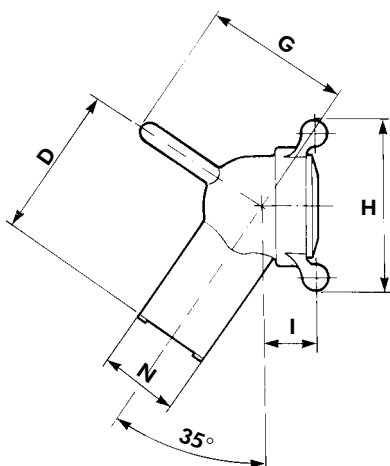
CODICE CODE	CODICE CODE
G203 0000	G203 1000

A	74	
B	56	
C	33	
D	52.5	
E	-	33
G	46.5	
H	54	
I	19.5	
L	-	11
N	25	Ø16.5
Massa Weight Kg	0.270	0.350



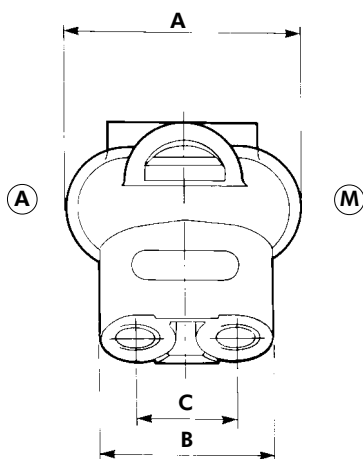
A1 G203 0000

A2 G203 1000



kit riparazione
repair kit
SB 340 003

- (A) AUTOMATICO / ALIMENTAZIONE
SUPPLY LINE
- (M) MODERABILE / COMANDO
CONTROL LINE



Raccordo filettato M16x1.5 profondità 15.
Thread ports M16x1.5 depth 15.

CARATTERISTICHE DI IMPIEGO WORKING DATA

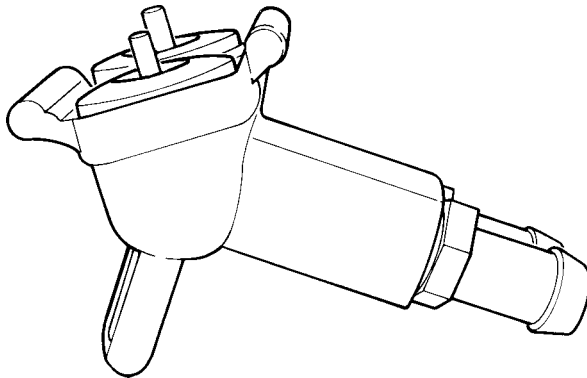
Fluido utilizzato Working medium	ARIA / AIR
Pressione d'esercizio Operating pressure	MAX 10 bar
Temperatura di impiego Working temperature	-40 °C+ 80°C
Abbinabile con In combination with	G206

G204

GIUNTI DI ACCOPPIAMENTO (tipo CUNA) PALM COUPLING (CUNA type)

PER RIMORCHIO FOR TRAILER

APPARECCHI CONFORMI ALLA NORMA CUNA NC. 144 - 04
IN ACCORDANCE WITH CUNA NORM NC. 144 - 04

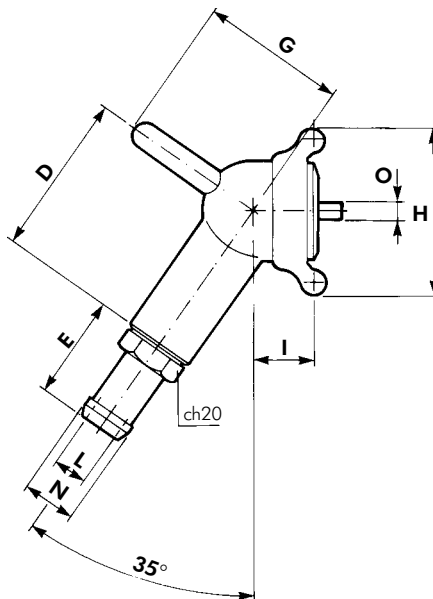
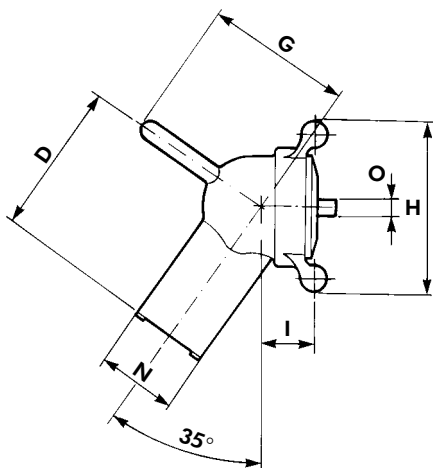

A1
A2

CODICE	
CODE	
G204 0000	

CODICE	
CODE	
G204 1000	

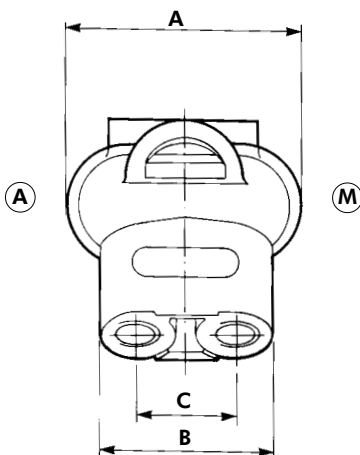
A	74	
B	56	
C	33	
D	52.5	
E	-	33
F	58	
G	46.5	
H	54	
I	19.5	
L	-	Ø11
N	25	Ø16.5
O	Ø5	
Massa Weight Kg	0.260	0.340

A1 G204 0000

A2 G204 1000


kit riparazione
repair kit
SB 340 005

- Ⓐ AUTOMATICO / ALIMENTAZIONE
SUPPLY LINE
- Ⓜ MODERABILE / COMANDO
CONTROL LINE



Raccordo filettato M16x1.5 profondità 15.
Thread ports M16x1.5 depth 15.

CARATTERISTICHE DI IMPIEGO WORKING DATA

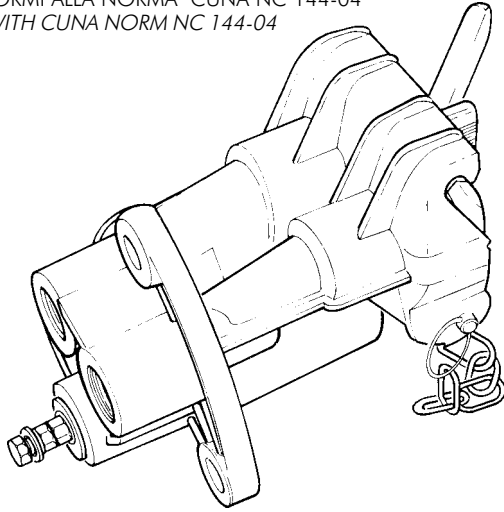
Fluido utilizzato Working medium	ARIA / AIR
Pressione d'esercizio Operating pressure	MAX 10 bar
Temperatura di impiego Working temperature	-40 °C+ 80°C
Abbinabile con In combination with	G205

GIUNTI DI ACCOPPIAMENTO (tipo CUNA) PALM COUPLING (CUNA type)

G205

PER MOTRICE FOR TRUCK

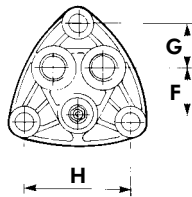
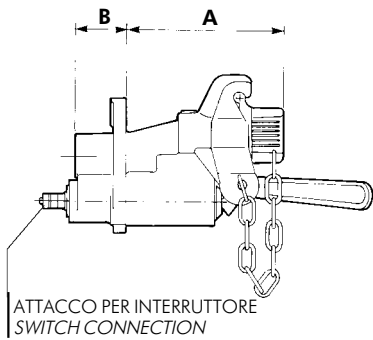
APPARECCHI CONFORMI ALLA NORMA CUNA NC 144-04
IN ACCORDANCE WITH CUNA NORM NC 144-04



A1	A2	A3	A4
CODICE CODE G205 0000	CODICE CODE G205 0040	CODICE CODE G205 0050	CODICE CODE G205 1040

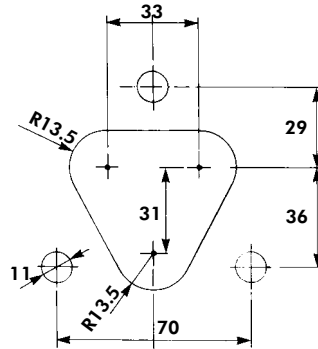
A	105		
B	33	53.5	
C	165		
D	83		
E	58	38	
F	36		
G	29		
H	70		
Massa Weight Kg	1.010	0.990	0.990
			1.110

A1 G205 0000

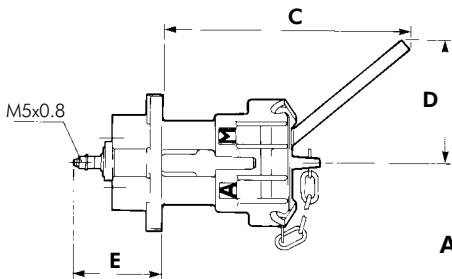


Raccordo filettato M18X1.5 profondità 15.
Thread port M18X1.5 depth 15.

POSIZIONE FORATURE PER FISSAGGIO
POSITION OF INSTALLATION HOLES



kit riparazione
repair kit
SB 340 004

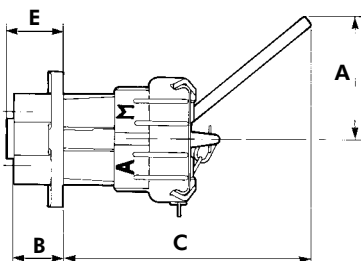


A = AUTOMATICO / ALIMENTAZIONE
SUPPLY LINE
M = MODERABILE / COMANDO
CONTROL LINE

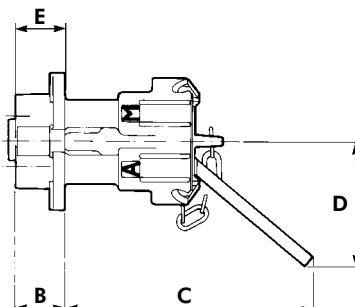
CARATTERISTICHE DI IMPIEGO WORKING DATA

Fluido utilizzato Working medium	ARIA / AIR
Pressione d'esercizio Operating pressure	MAX 10 bar
Temperatura di impiego Working temperature	-40 °C + 80 °C
Abbinabile con In combination with	G204

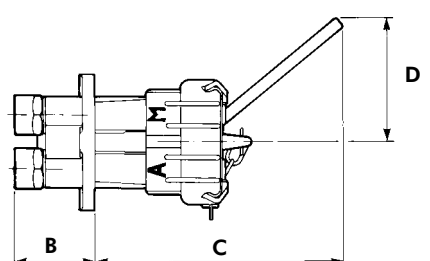
A2 G205 0040



A3 G205 0050



A4 G205 1040



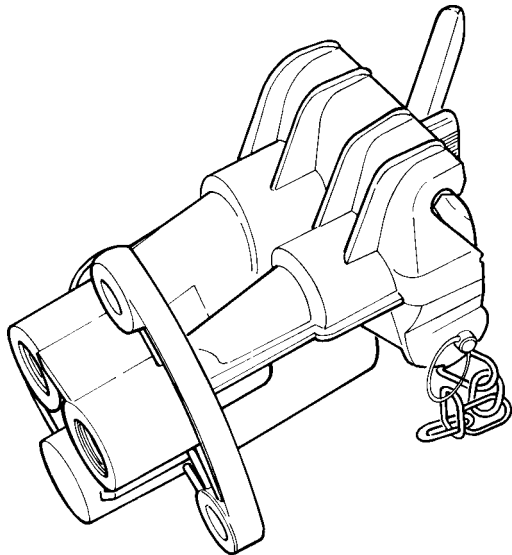
Raccordo filettato M22X1.5 profondità 12.
Thread port M22X1.5 depth 12.

G206

GIUNTI DI ACCOPPIAMENTO (tipo CUNA) PALM COUPLING (CUNA type)

PER SEMIRIMORCHIO FOR SEMITRAILER

APPARECCHI CONFORMI ALLA NORMA CUNA NC 144-02
IN ACCORDANCE WITH CUNA NORM NC 144-02

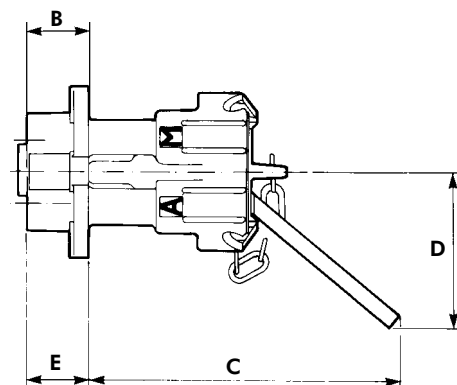
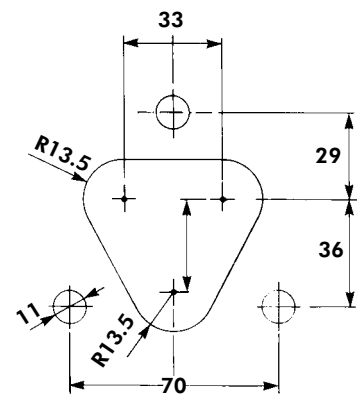
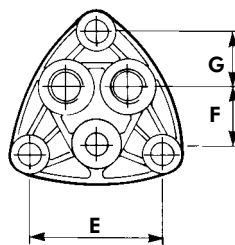
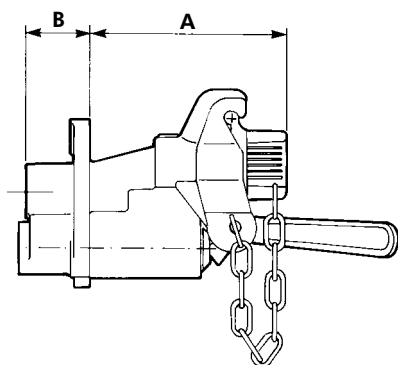


CODICE
CODE
G206 000

A	105
B	33
C	165~
D	83
E	33
F	36
G	29
H	70

kit riparazione
repair kit
SB 340 005

POSIZIONE FORATURE PER FISSAGGIO
POSITION OF INSTALLATION HOLES



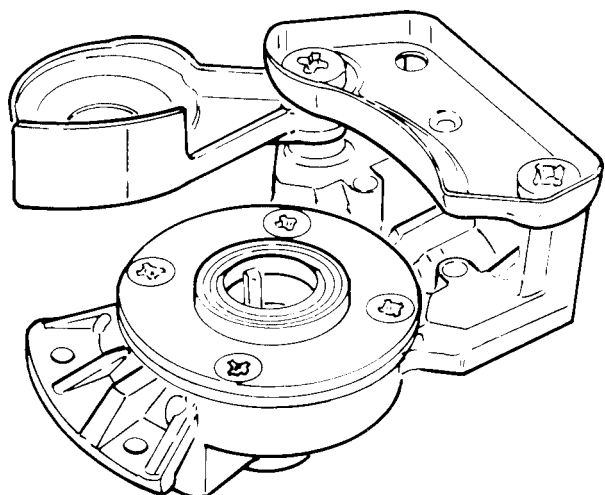
Raccordo filettato M18X1.5 profondità 15.
Thread port M18X1.5 depth 15.

CARATTERISTICHE DI IMPIEGO WORKING DATA

Fluido utilizzato Working medium	ARIA / AIR
Pressione d'esercizio Operating pressure	MAX 10 bar
Temperatura di impiego Working temperature	-40 °C+ 80°C
Abbinabile con In combination with	G203
Massa Weight	Kg 0.970

A = AUTOMATICO / ALIMENTAZIONE - SUPPLY LINE
M = MODERABILE / COMANDO - CONTROL LINE

GIUNTI DI ACCOPPIAMENTO (tipo ISO) - note d'installazione PALM COUPLINGS (ISO type) - installation recommendations



Nota. Apparecchi conformi alle norme UNI 9129 e ISO 1728.
Note. In accordance with norm UNI 9129 and ISO 1728.

NOTE

1 - I giunti di accoppiamento devono essere montati nelle posizioni indicate dagli schemi (Pag. G10) in conformità alle norme UNI 9129 e ISO 1728

2 - Nel montaggio, i giunti di accoppiamento, fissi, devono avere il lato di tenuta verticale e orientato in modo che il peso della parte mobile, con il relativo tubo, non tenda a disaccoppiarli (vedi figura A)

3 - Le tubazioni di collegamento con i relativi giunti mobili, una volta staccate, devono, per motivi di sicurezza, potersi agganciare; per i rimorchi, utilizzare l'apposito supporto (5509991 pag. G14), per i trattori è previsto l'inserimento sul giunto di una piastrina con foro (9900196) che ne consente l'aggancio.

INSTRUCTIONS

1 - The palm couplings must be mounted in the positions shown in the diagrams (Page G10) in compliance with UNI 9129 and ISO 1728

2 - When mounting fixed couplings, the sealed sides must be vertical and positioned so that the weight of the mobile part and hose does not cause them to decouple (see figure A).

3 - For safety reasons, it must be possible to couple the hoses connecting the mobile couplings once they have been released. Use the special support (5509991, page G13) for trailers; for tractors the coupling should be equipped with a drilled plate (9900196) to enable coupling.

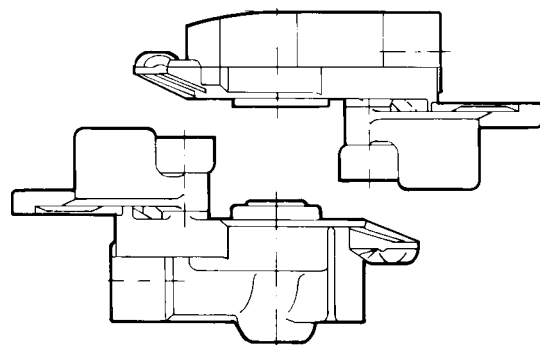


Figura A / Figure A

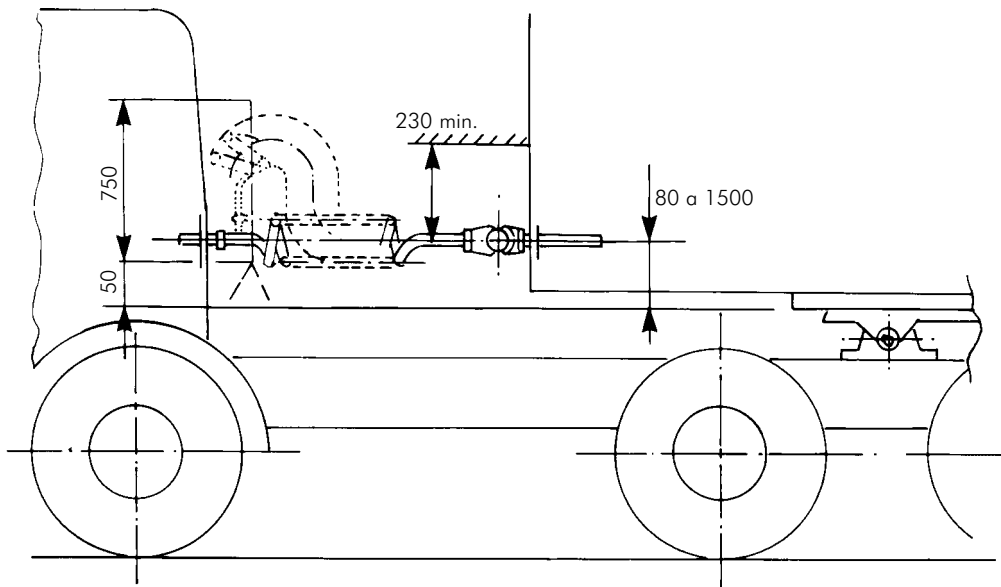
IMPIEGO

Servono per realizzare il collegamento pneumatico dell'impianto di frenatura tra il veicolo trainante e quello rimorchiato, ed il disaccoppiamento degli impianti quando i due veicoli vengono separati. L'aggancio si effettua soltanto con giunti compatibili tra loro (stesso colore di coperchio), in quanto il risalto di sicurezza, non consente errori.

USE

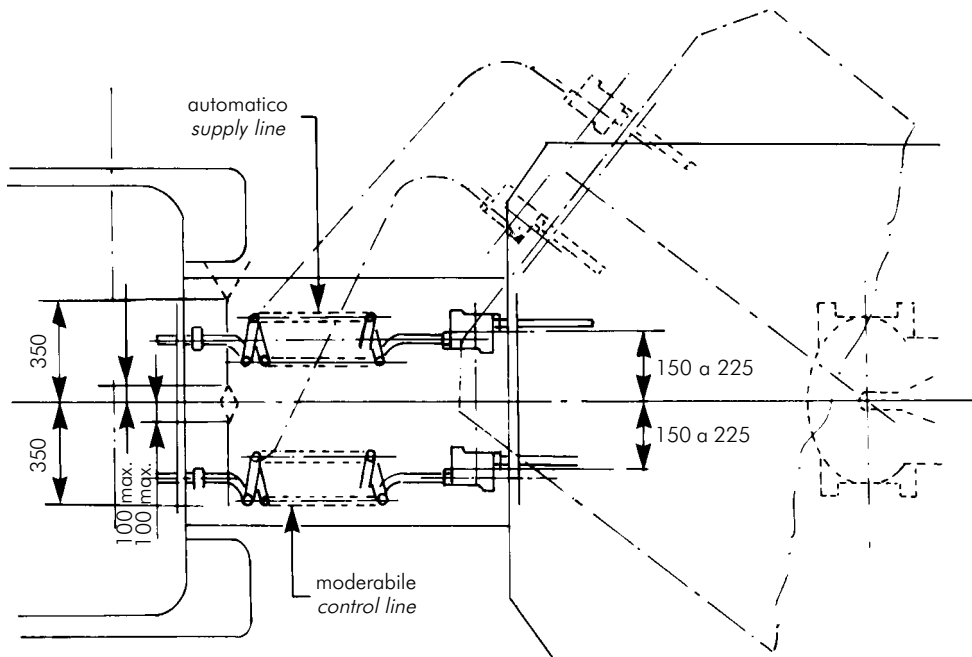
This type of device acts as a pneumatic coupling between the braking systems of the towing vehicle and the towed vehicle. It is also designed to decouple the systems when the two vehicles are separated. Only compatible couplings (i.e. those with the same coloured cover) may be coupled since there is no margin of error for the safety stop.

INSTALLAZ. DEI GIUNTI DI ACCOP. secondo la norma UNI 9129 e ISO 1728
PALM COUPLING INSTAL. in accordance with norm UNI 9129 and ISO 1728

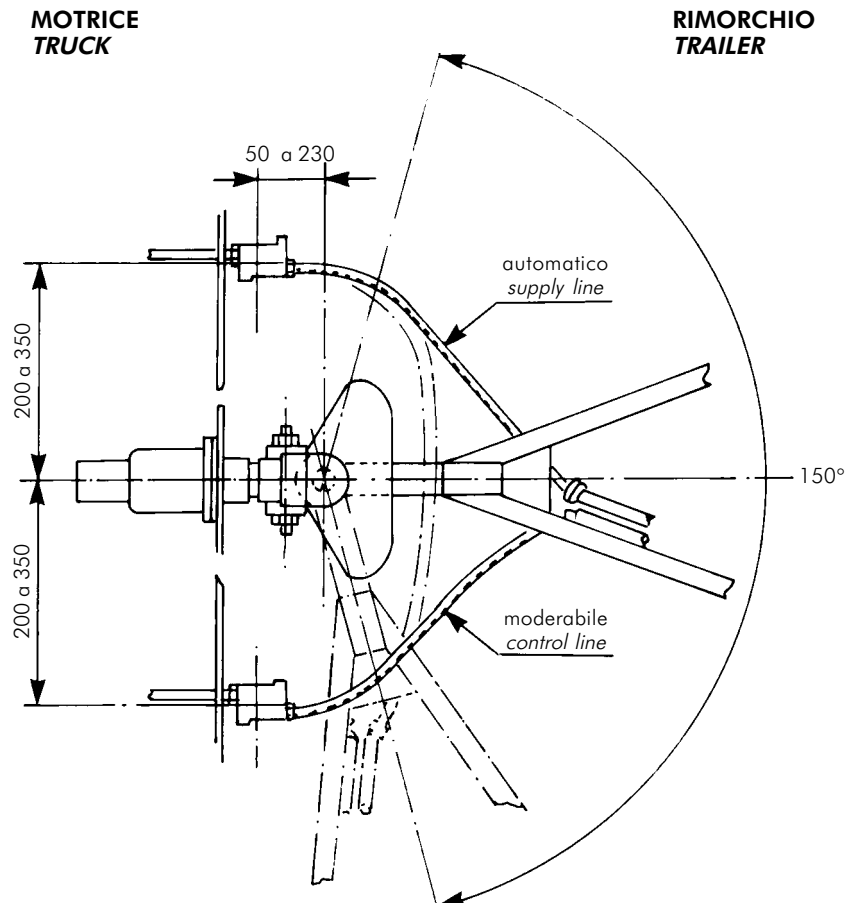
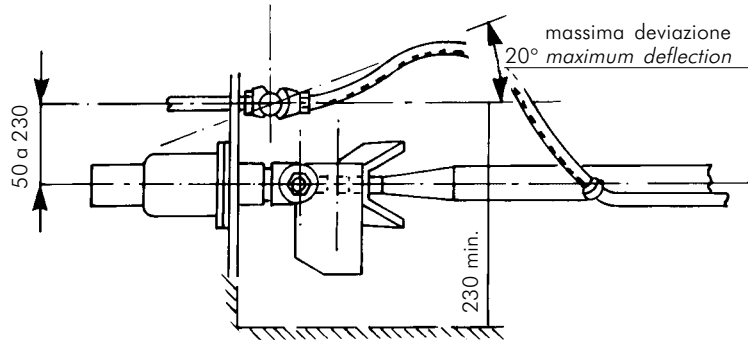


TRATTORE
SEMITRAILER TRACTOR

SEMIRIMORCHIO
SEMITRAILER



INSTALLAZ. DEI GIUNTI DI ACCOP. secondo la norma UNI 9129 e ISO 1728
PALM COUPLING INSTAL. in accordance with norm UNI 9129 and ISO 1728

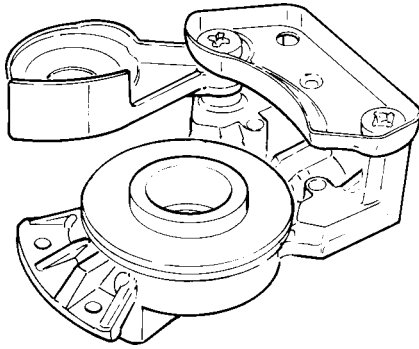


G550

GIUNTI DI ACCOPPIAMENTO (tipo ISO) PALM COUPLING (ISO type)

PER VEICOLI RIMORCHIATI FOR TRAILERS

APPARECCHI CONFORMI ALLE NORME UNI 9129 E ISO1728
IN ACCORDANCE WITH NORM UNI 9129 AND ISO1728

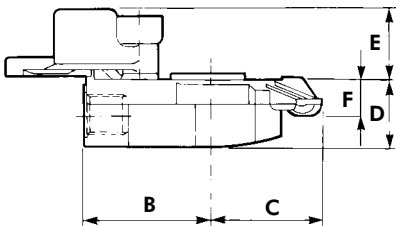


	A1	A2	A3	A4
CODICE CODE	G550 0010	G550 0011	G550 0111	G550 0511

A	87			
B	50			
C	43.5			
D	27	34	69	
E	28			
F	14			
Massa Weight Kg	0.170	0.170	0.180	0.230

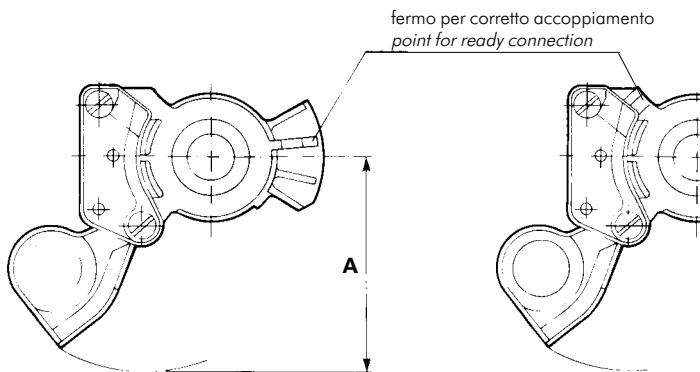
A1 G550 0010

COLORE ROSSO / AUTOMATICO - ALIMENTAZIONE
RED COLOUR / SUPPLY LINE



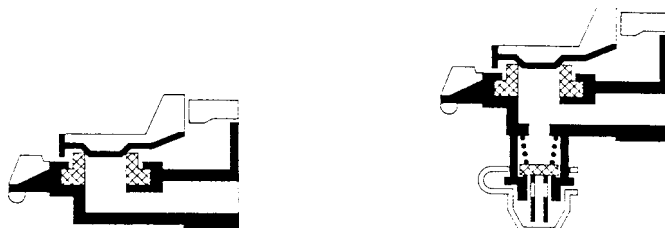
A2 G550 0011

COLORE GIALLO /
MODERABILE - COMANDO
YELLOW COLOUR / CONTROL
LINE



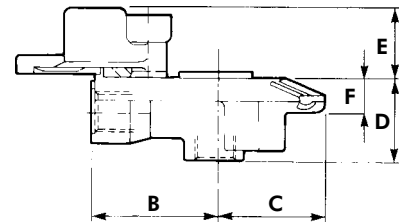
Raccordi filettati M16x1.5 profondità 15.
Thread ports M16x1.5 depth 15.

CON PRESA DI CONTROLLO
WITH TEST CONNECTION



A3 G550 0111

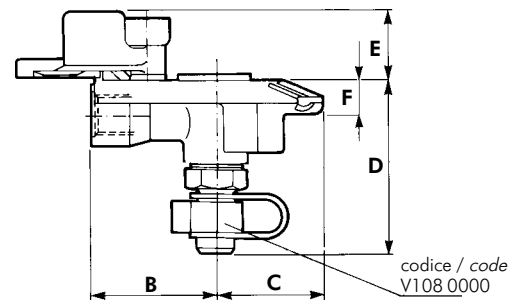
COLORE GIALLO / MODERABILE - COMANDO
YELLOW COLOUR / CONTROL LINE



Con raccordo per presa di controllo
With test connection port

A4 G550 0511

COLORE GIALLO / MODERABILE - COMANDO
YELLOW COLOUR / CONTROL LINE



Completo di presa di controllo pressione.
With test connection.

CARATTERISTICHE DI IMPIEGO WORKING DATA

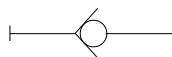
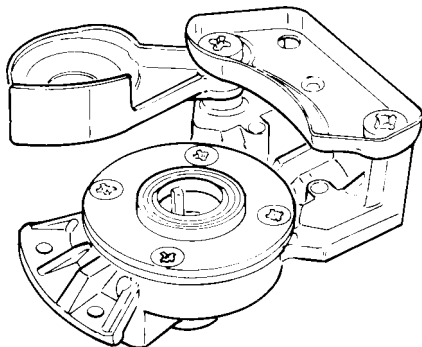
Fluido utilizzato Working medium	ARIA / AIR
Pressione d'esercizio Operating pressure	MAX 10 bar
Temperatura di impiego Working temperature	-40 °C+ 80°C

GIUNTI DI ACCOPPIAMENTO (tipo ISO) PALM COUPLING (ISO type)

G550

PER VEICOLI A MOTORE FOR TRUCKS

APPARECCHI CONFORMI ALLE NORME UNI 9129 E ISO1728
IN ACCORDANCE WITH NORM UNI 9129 AND ISO1728



A1 **A2**

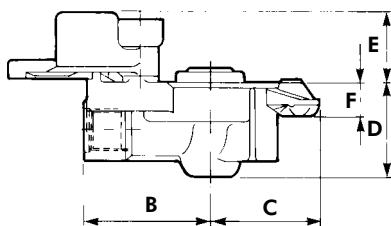
CODICE CODE	CODICE CODE
G550 0000	G550 0001

A	87
B	52
C	43.5
D	38
E	25.5
F	14

kit riparazione
repair kit
SB 340 008

A1 G550 0000

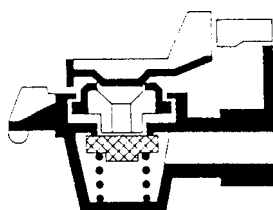
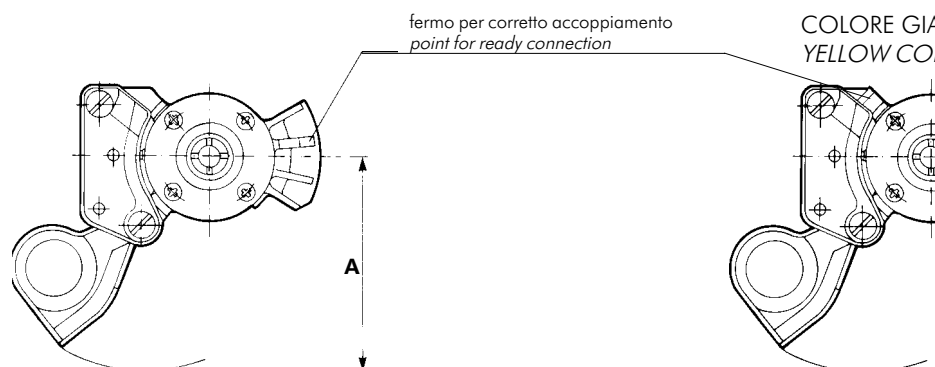
COLORE ROSSO / AUTOMATICO - ALIMENTAZIONE
RED COLOUR / SUPPLY LINE



Raccordi filettati M16x1.5 profondità 15.
Thread ports M16x1.5 depth 15.

A2 G550 0001

COLORE GIALLO / MODERABILE - COMANDO
YELLOW COLOUR / CONTROL LINE



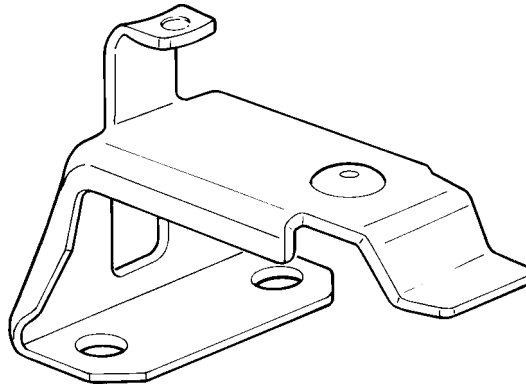
CARATTERISTICHE DI IMPIEGO WORKING DATA

Fluido utilizzato Working medium	ARIA / AIR
Pressione d'esercizio Operating pressure	MAX 10 bar
Temperatura di impiego Working temperature	-40 °C + 80 °C
Massa Weight	Kg 0.240

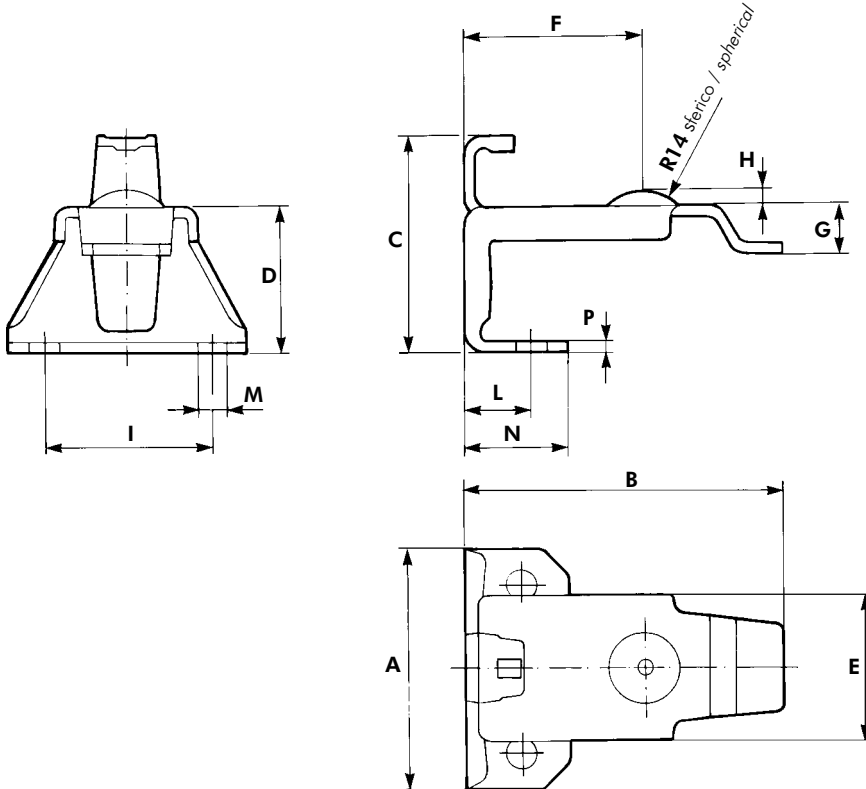
SUPPORTO GIUNTO DI ACCOPPIAMENTO
SUPPORT FOR PALM COUPLING

550

CODICE
 CODE
 550 9991



A	64.5
B	86.5
C	58.5
D	39
E	39
F	48.5
G	13
H	4
I	45
L	15
M	Ø 9
N	28
P	spess. 3



UTILIZZABILE PER GIUNTI :
 UTILIZABLE FOR PALM COUPLING :
 G201 tutti i tipi / all types
 G550 0010
 G550 0011
 G550 0111
 G550 0511