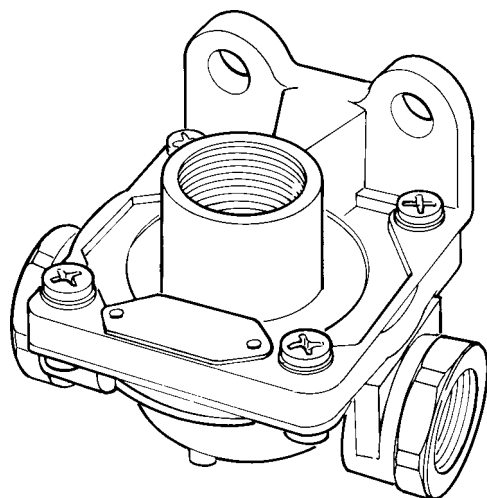


VALVOLE DI REGOLAZIONE / *ADJUSTING VALVES*

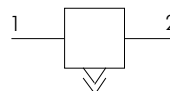
VALVOLA DI SCARICO RAPIDO QUICK RELEASE VALVE

V107

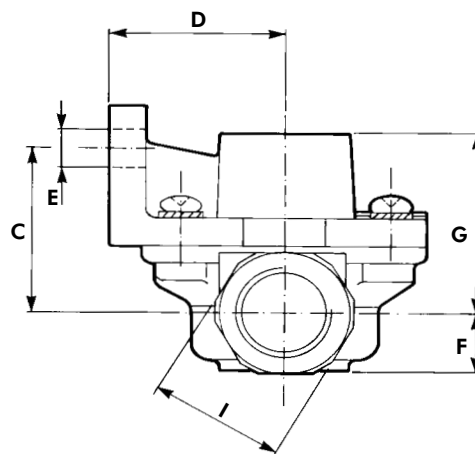
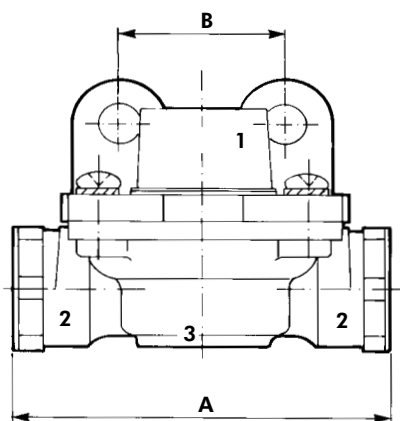
CODICE
CODE
V107 0000



- 1 - ENTRATA / INLET
- 2 - USCITA / OUTLET
- 3 - SCARICO / EXHAUST



A	86
B	38
C	40
D	39
E	∅ 9
F	14
G	46
H	∅ 30
I	ch 30



Raccordi filettati M22x1.5 profondità 14.
Thread ports M22x1.5 depth 14.

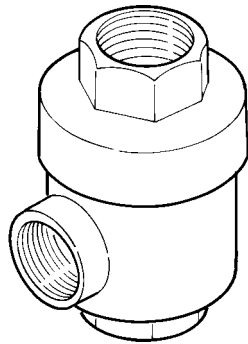
CARATTERISTICHE DI IMPIEGO WORKING DATA

Fluido utilizzato Working medium	ARIA / AIR
Pressione d'esercizio Operating pressure	MAX 12 bar
Temperatura di impiego Working temperature	-40 °C + 80 °C
Passaggio nominale Nominal diameter	> ∅ 12 mm.
Massa Weight	Kg 0.230

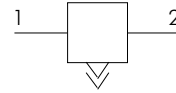
V107

VALVOLA DI SCARICO RAPIDO QUICK RELEASE VALVE

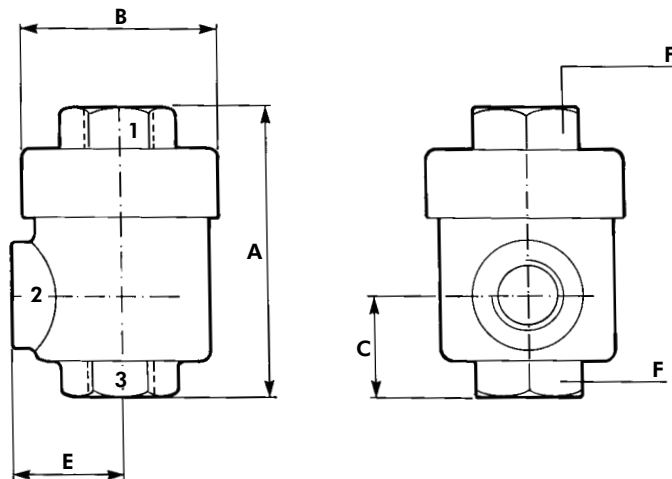
CODICE
CODE
V107 0001



- 1 - ENTRATA / INLET
- 2 - USCITA / OUTLET
- 3 - SCARICO / EXHAUST



A	54
B	∅ 34
C	18
E	25
F	ch 17



Raccordi filettati G 1/4" profondità min. 9.
Thread ports G 1/4" min. depth 9.

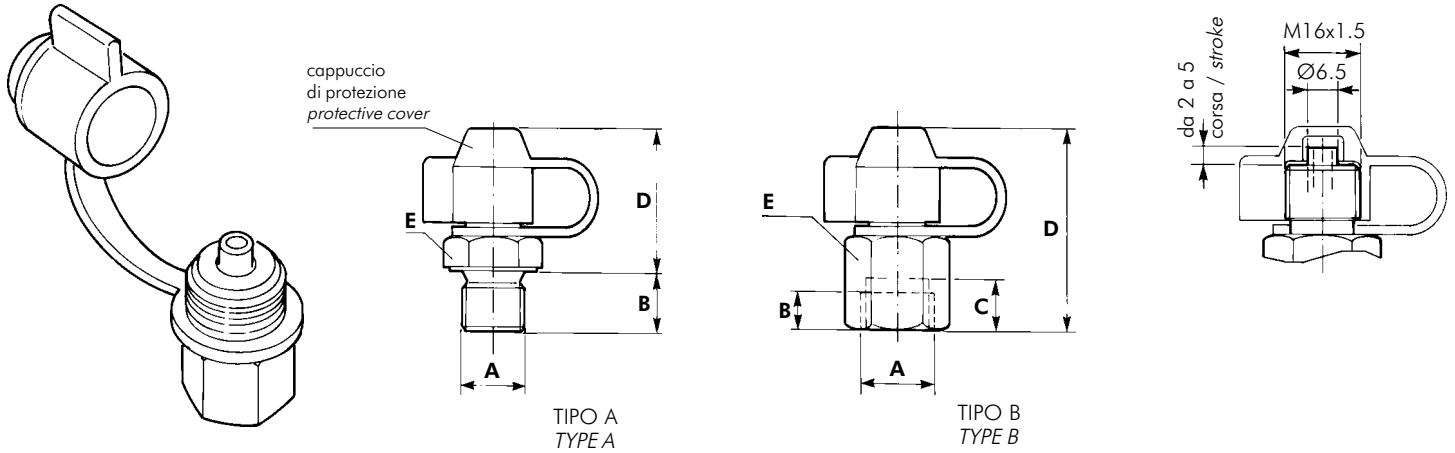
CARATTERISTICHE DI IMPIEGO WORKING DATA

Fluido utilizzato Working medium	ARIA / AIR
Pressione d'esercizio Operating pressure	MAX 12 bar
Temperatura di impiego Working temperature	-40 °C + 125 °C
Passaggio nominale Nominal diameter	∅ 8 mm.
Massa Weight	Kg 0.150

PRESE DI CONTROLLO TEST CONNECTORS

V108

ATTACCO CONFORME ALLA NORMA UNI ISO 3583
CONNECTION IN ACCORDANCE WITH NORM UNI ISO 3583

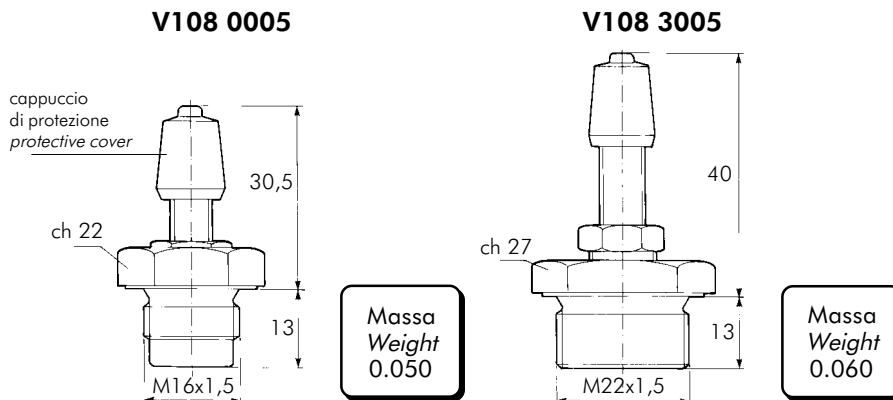


	CODICE CODE	A	B	C	D	E	Massa Weight
TIPO A TYPE A	V108 3500	G1/4"	12	-	30	ch 19	0.050
	V108 3600	M14x1.5	12	-	30	ch 19	0.060
	V108 0000	M16x1.5	12	-	30	ch 22	0.070
	V108 3000	M22x1.5	12	-	30	ch 27	0.080
TIPO B TYPE B	V108 4800	M12x1.5	8	10,5	44	ch 19	0.050
	V108 5000	M14x1.5	8	10,5	44	ch 19	0.060
	V108 6000	M16x1.5	8	10,5	44	ch 22	0.070
	V108 7000	M18x1.5	8	10,5	44	ch 24	0.070
	V108 9000	M22x1.5	8	10,5	44	ch 27	0.080

CARATTERISTICHE DI IMPIEGO WORKING DATA

Fluido utilizzato Working medium	ARIA / AIR
Pressione d'esercizio Operating pressure	MAX 14 bar
Temperatura di impiego Working temperature	-40 °C+80 °C

PRESE DI CONTROLLO PER VEICOLI DESTINATI ALLA SVIZZERA
TEST CONNECTOR FOR SWITZERLAND DESTINATION TRUCKS

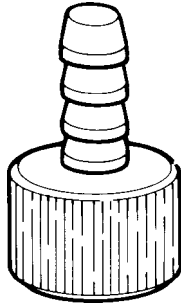


CARATTERISTICHE DI IMPIEGO WORKING DATA

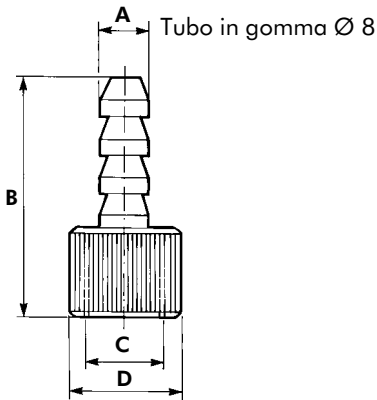
Fluido utilizzato Working medium	ARIA / AIR
Pressione d'esercizio Operating pressure	MAX 10 bar
Temperatura di impiego Working temperature	-40 °C+40 °C

V108

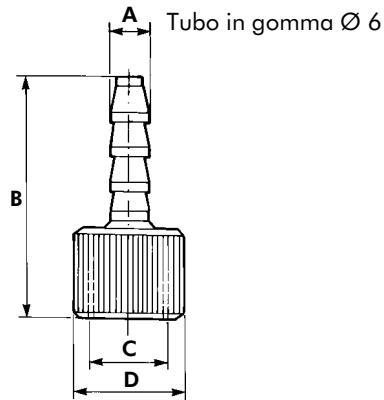
ATTACCHI PER PRESE DI CONTROLLO FITTINGS FOR TEST CONNECTORS



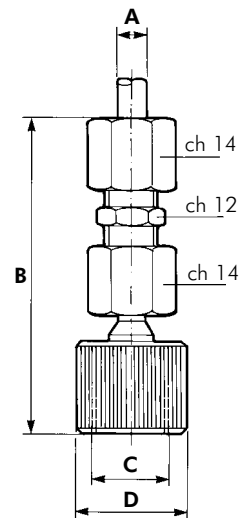
	A1	A2	A3	A4	A5
CODICE CODE	V108 7011	V108 7012	V108 7021	V108 7022	V108 7023
A	∅ 9	∅ 7	T6	G1/4"	T8
B	50		65		
C	M16x1.5				
D	∅ 22				



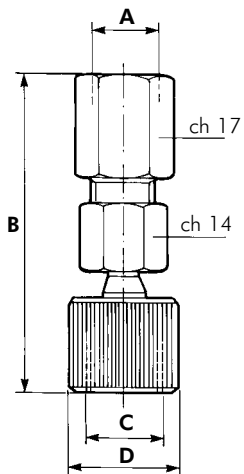
A1 V108 7011



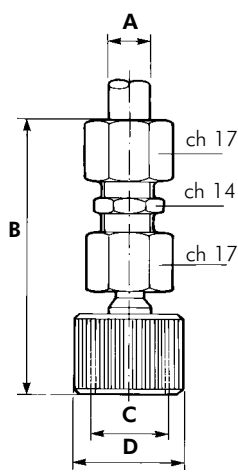
A2 V108 7012



A3 V108 7021



A4 V108 7022

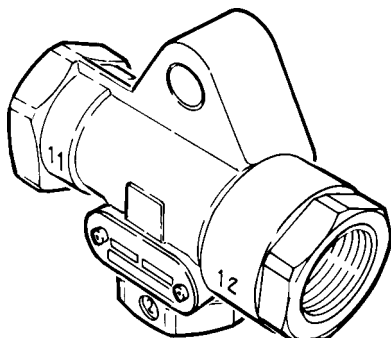


A5 V108 7023

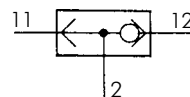
DOPPIA VALVOLA DI ARRESTO DOUBLE CHECK VALVE

V110

CODICE
CODE
V110 0000

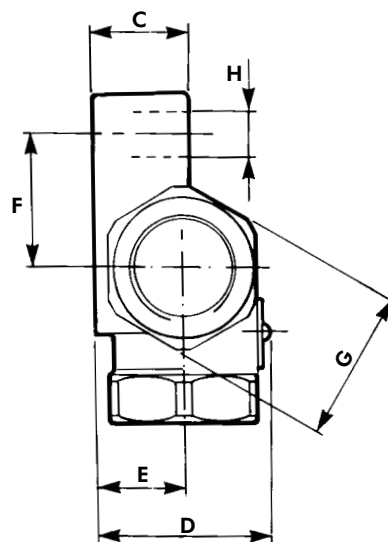
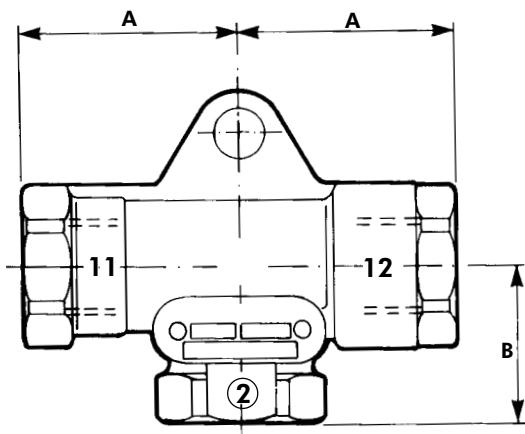


- 11 - ENTRATA / INLET
- 12 - ENTRATA / INLET
- 2 - USCITA / OUTLET



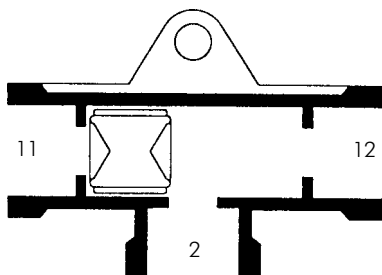
A	43
B	31.5
C	19.5
D	35.5
E	18
F	27
G	ch 30
H	Ø 9

kit riparazione
repair kit
SB 340 038



Raccordi filettati M22x1.5 profondità 14.
Thread ports M22x1.5 depth 14.

SELETTORE DI CIRCUITO (funzione "OR")
CIRCUIT SELECTOR ("OR" - function)



- 11 - ENTRATA / INLET
- 12 - ENTRATA / INLET
- 2 - USCITA / OUTLET

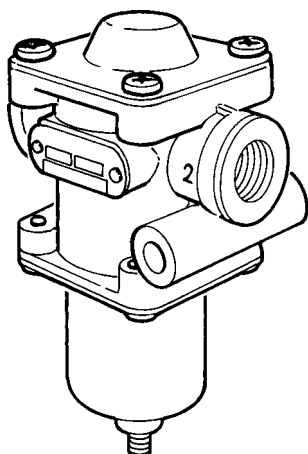
CARATTERISTICHE DI IMPIEGO WORKING DATA

Fluido utilizzato Working medium	ARIA / AIR
Pressione d'esercizio Operating pressure	min. 0.5 bar max 10 bar
Temperatura di impiego Working temperature	-40 °C + 80 °C
Passaggio nominale Nominal diameter	Ø 12 mm.
Massa Weight	Kg 0.170

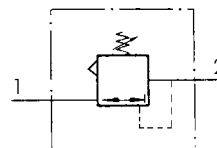
V208

LIMITATORE DI PRESSIONE PRESSURE LIMITING VALVE

CODICE
CODE
V208

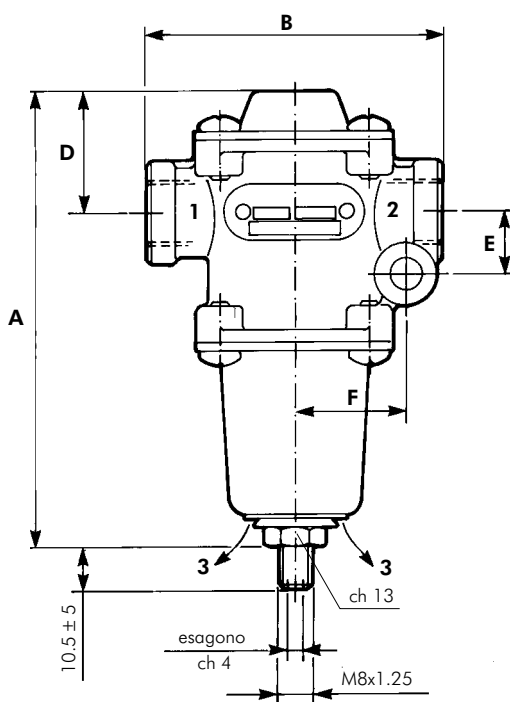


- 1 - ALIMENTAZIONE
SUPPLY
- 2 - UTILIZZAZIONE
DELIVERY
- 3 - SCARICO
EX-HAUST



A	112
B	72
C	48
D	30
E	15.5
F	27
G	50
H	Ø 6.5

kit riparazione
repair kit
SB 340 033



codice code	pressioni / pressures (bar)			codice sostituito changed code
	valore di taratura setting pressure	press. di aliment. supply pressure	campo di regolazione adjusting range	
V 208 0105	0.5 +0.3	8	da 0.5 a 2 from 0.5 to 2	-
V 208 0115	1.5 +0.3	8		V 208 0001
-	-	-	-	-
V 208 0125	2.5 +0.3	8	da 2 a 6 from 2 to 6	V 208 0002
-	-	-		-
V 208 0135	3.5 +0.3	8		V 208 0004
V 208 0140	4.0 +0.3	8		V 208 0005
-	-	-		-
V 208 0150	5.0 +0.3	8	da 6 a 9 from 6 to 9	V 208 0041
V 208 0160	6.0 +0.3	8		V 208 0010
V 208 0164	6.4 ± 0.15	10		V 208 0008
V 208 0165	6.5 +0.3	8		V 208 0051
V 208 0175	7.5 ± 0.3	10		V 208 0000
V 208 0180	8.0 ± 0.2	10		-
V 208 0185	8.5 ± 0.3	10		-
-	-	-		-

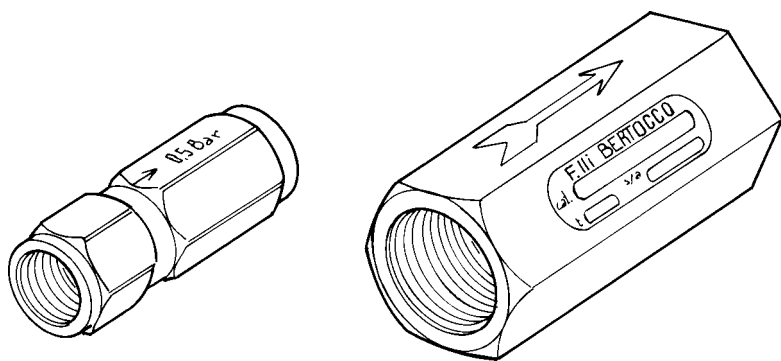
Raccordi filettati M16x1.5 profondità 12.
Thread ports M16x1.5 depth 12.

CARATTERISTICHE DI IMPIEGO WORKING DATA

Fluido utilizzato Working medium	ARIA / AIR
Pressione d'esercizio Operating pressure	MAX 16 bar
Temperatura di impiego Working temperature	-40 °C + 80 °C
Passaggio nominale Nominal diameter	Ø 10 mm.
Massa Weight	Kg 0.270

VALVOLA DI RITENUTA CHECK VALVE

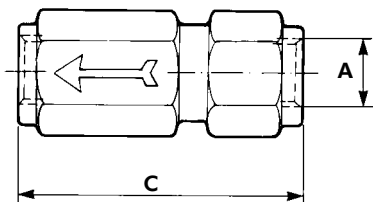
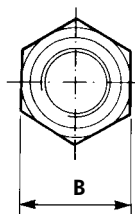
V604



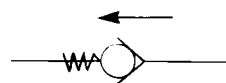
	A1	A2	A3
	CODICE CODE V604 0000	CODICE CODE V604 0001	CODICE CODE V604 0020
A	G1/4"		M22x1.5
B	ch 19		ch 30
C	50		58
Passaggio nominale Nominal diameter	Ø 6		Ø 9

Nota Montare la valvola con la freccia rivolta nel senso dell'alimentazione.
Note Mount the valve turn signal in supply way

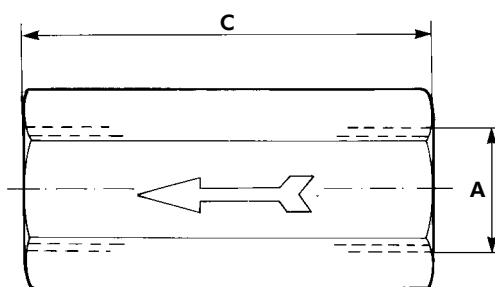
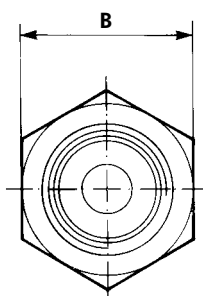
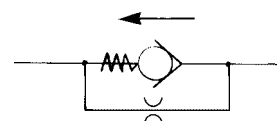
A1 V604 0000 / A2 V604 0001



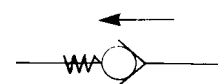
A1 V604 0000



A2 V604 0001 con by-pass Ø 1



A3 V604 0020

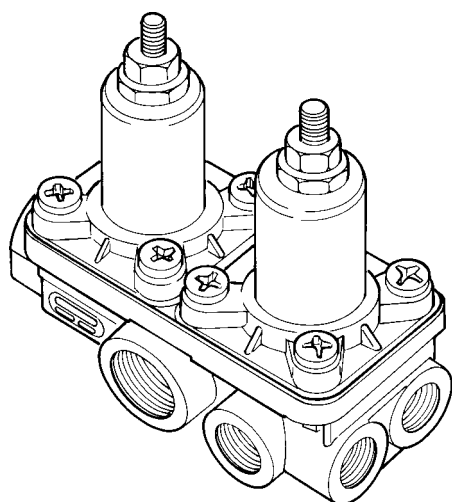


CARATTERISTICHE DI IMPIEGO WORKING DATA

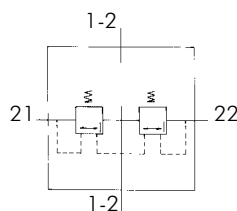
Fluido utilizzato Working medium	ARIA / AIR
Pressione d'esercizio Operating pressure	MIN. 0.5 bar MAX 12 bar
Temperatura di impiego Working temperature	-40 °C + 80 °C
Massa Weight	Kg 0.08

V608

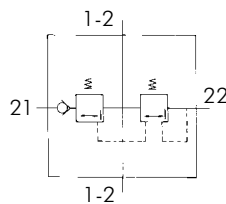
VALVOLA PRESSIONE CONTROLLATA DOPPIA DOUBLE PRESSURE CONTROL VALVE



- 1-2 - ALIMENTAZIONE
SUPPLY
- 21 - UTILIZZAZIONE (sezione 1)
DELIVERY (section 1)
- 22 - UTILIZZAZIONE (sezione 2)
DELIVERY (section 2)



SENZA VALVOLA DI RITENUTA
WITHOUT CHECK VALVE

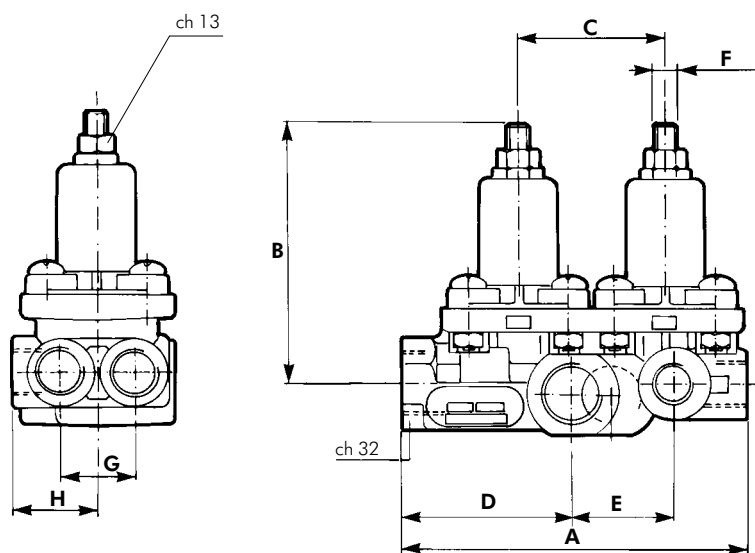


CON VALVOLA DI RITENUTA
WITH CHECK VALVE

CODICE
CODE
V608 0...

A	120
B	92± 5
C	51
D	59.5
E	35.5
F	M8x1.25
G	26
H	30

kit riparazione
repair kit
SB 340 039



Raccordi filettati 1-2 e 21 = M22x1.5 profondità 15.
22 = M16x1.5 profondità 15.
Thread ports 1-2 and 21 = M22x1.5 depth 15.
22 = M16x1.5 depth 15.

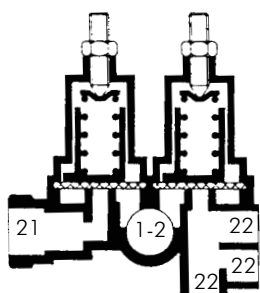
con valvola di ritenuta
sulla sezione 21
with check valve
on section 21

codice code	valore di taratura (bar) setting pressure (bar)		codice code
	sezione 21 section 21	sezione 22 section 22	
V 608 0000	6.2-0.3	6.2-0.3	V 608 0100
V 608 0001	4.2-0.3	4.2-0.3	V 608 0101
V 608 0003	6.2-0.3	6.8-0.3	V 608 0103
V 608 0004	6.0-0.3	6.0-0.3	V 608 0104
V 608 0005	4.5-0.3	6.2-0.3	V 608 0105
V 608 0006	4.2-0.3	5.5-0.3	V 608 0106
V 608 0007	5.5-0.3	5.5-0.3	V 608 0107

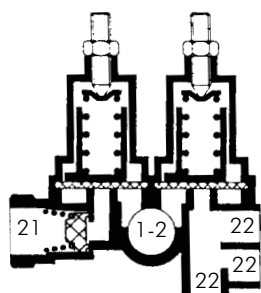
CARATTERISTICHE DI IMPIEGO WORKING DATA

Fluido utilizzato Working medium	ARIA / AIR
Pressione d'esercizio Operating pressure	MAX 12 bar
Temperatura di impiego Working temperature	-40 °C+80 °C
Passaggio nominale Nominal diameter	1=Ø 15 mm 2=Ø 8 mm
Campo di regolazione Adjusting range	0.5 ÷ 7 bar
Massa Weight	Kg 0.530

SENZA VALVOLA DI RITENUTA
WITHOUT CHECK VALVE



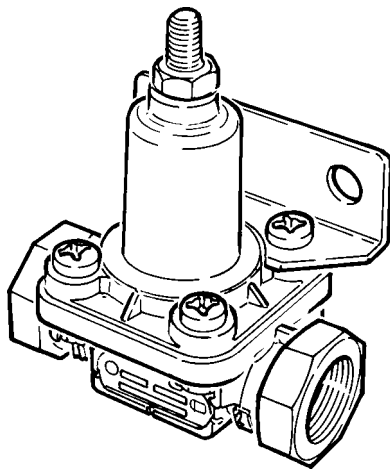
CON VALVOLA DI RITENUTA
WITH CHECK VALVE



VALVOLA PRESSIONE CONTROLLATA PRESSURE CONTROL VALVE

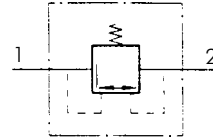
V609

CODICE
CODE
V609 0...

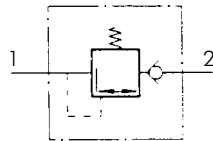


- 1 - ALIMENTAZIONE
SUPPLY
- 2 - UTILIZZAZIONE
DELIVERY

con ritorno limitato
with limited return

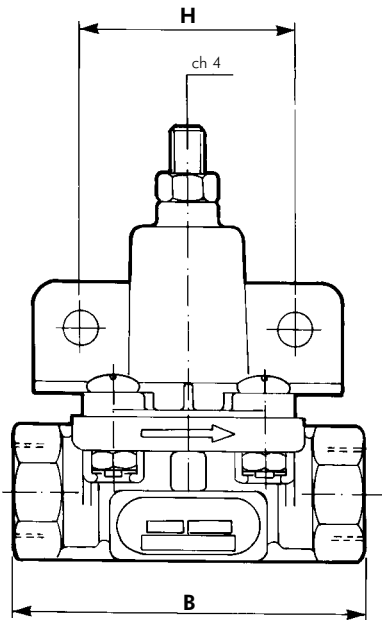


senza ritorno
without return

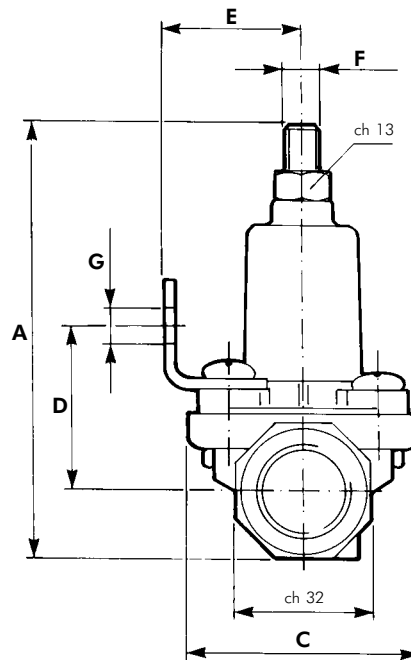


A	103±5
B	82
C	54x54
D	39
E	32.5
F	M8x1.25
G	Ø8.5
H	50

kit riparazione
repair kit
SB 340 040

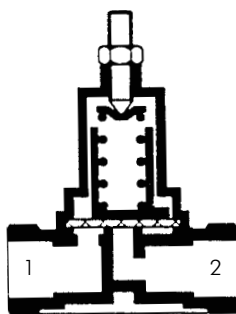


Raccordi filettati M22x1.5 profondità 14.
Thread ports M22x1.5 depth 14.

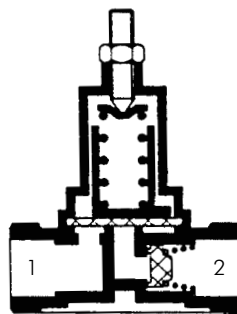


con valvola di ritenuta
with check valve on

codice code	valore di taratura (bar) setting pressure (bar)	codice code
V 609 0005	0.5 -0.3	V 609 0105
V 609 0008	0.8 -0.3	V 609 0108
V 609 0010	1.0 -0.3	V 609 0110
V 609 0036	3.6 -0.3	V 609 0136
V 609 0040	4.0 -0.3	V 609 0140
V 609 0042	4.2 -0.3	V 609 0142
V 609 0045	4.5 -0.3	V 609 0145
V 609 0050	5.0 -0.3	V 609 0150
V 609 0052	5.2 -0.3	V 609 0152
V 609 0055	5.5 -0.3	V 609 0155
V 609 0060	6.0 -0.3	V 609 0160
V 609 0062	6.2 -0.3	V 609 0162
V 609 0065	6.5 -0.3	V 609 0165
V 609 0068	6.8 -0.3	V 609 0168
V 609 0070	7.0 -0.3	V 609 0170
V 609 0080	8.0 -0.3	V 609 0180
V 609 0082	8.2 -0.3	V 609 0182
V 609 0085	8.5 -0.3	V 609 0185
V 609 0090	9.0 -0.3	V 609 0190



con ritorno limitato
with limited return



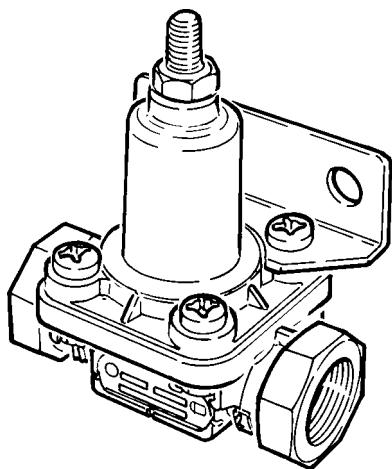
senza ritorno
without return

CARATTERISTICHE DI IMPIEGO WORKING DATA

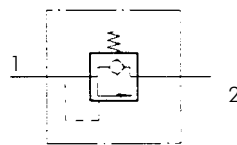
Fluido utilizzato Working medium	ARIA / AIR
Pressione d'esercizio Operating pressure	MAX 12 bar
Temperatura di impiego Working temperature	-40 °C +80 °C
Passaggio nominale Nominal diameter	Ø 8 mm.
Massa Weight	Kg 0.270

V609

VALVOLA PRESSIONE CONTROLLATA (con ritorno totale) PRESSURE CONTROL VALVE (with total return)



- 1 - ALIMENTAZIONE
SUPPLY
- 2 - UTILIZZAZIONE
DELIVERY

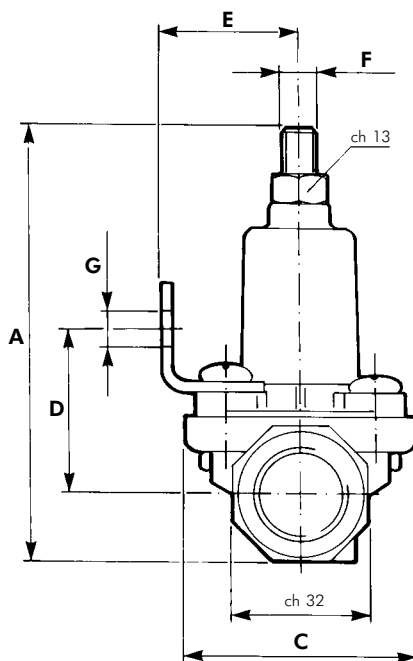
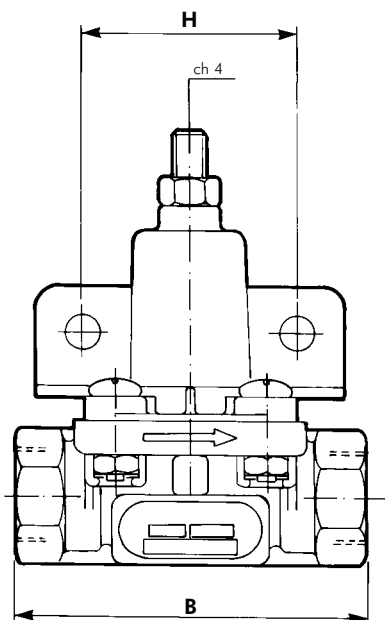


con ritorno totale
with total return

CODICE
CODE
V609 0...

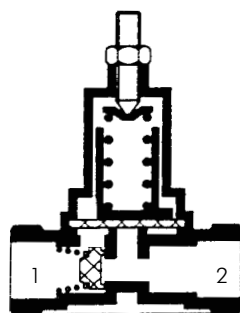
A	103± 5
B	82
C	54X54
D	39
E	32.5
F	M8x1.25
G	Ø8.5
H	50

kit riparazione
repair kit
SB 340 040



Raccordi filettati M22x1.5 profondità 14.
Thread ports M22x1.5 depth 14.

codice code	valore di taratura (bar) setting pressure (bar)
V 609 0505	0.5 -0.3
V 609 0508	0.8 -0.3
V 609 0510	1.0 -0.3
V 609 0536	3.6 -0.3
V 609 0540	4.0 -0.3
V 609 0542	4.2 -0.3
V 609 0545	4.5 -0.3
V 609 0550	5.0 -0.3
V 609 0552	5.2 -0.3
V 609 0555	5.5 -0.3
V 609 0560	6.0 -0.3
V 609 0562	6.2 -0.3
V 609 0565	6.5 -0.3
V 609 0568	6.8 -0.3
V 609 0570	7.0 -0.3
V 609 0580	8.0 -0.3
V 609 0582	8.2 -0.3
V 609 0585	8.5 -0.3
V 609 0590	9.0 -0.3



con ritorno totale
with total return

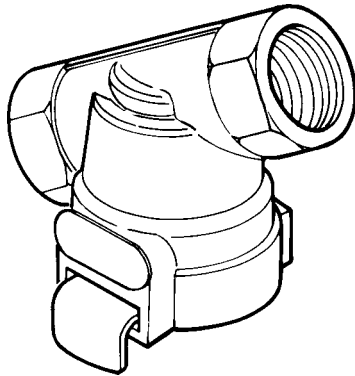
CARATTERISTICHE DI IMPIEGO WORKING DATA

Fluido utilizzato Working medium	ARIA / AIR
Pressione d'esercizio Operating pressure	MAX 12 bar
Temperatura di impiego Working temperature	-40 °C +80 °C
Passaggio nominale Nominal diameter	Ø 8 mm.
Massa Weight	Kg 0.270

FILTRO DI LINEA IN LINE FILTER

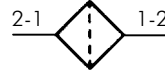
V610

CODICE
CODE
V610 0000



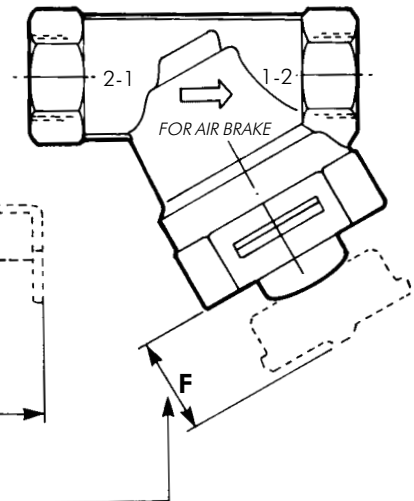
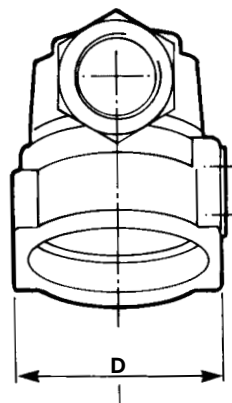
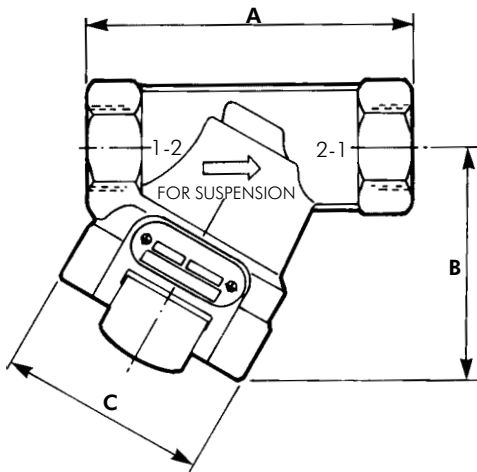
PER SOSPENSIONE / FOR SUSPENSION
1-2- ENTRATA / INLET
2-1- USCITA / OUTLET

PER FRENATURA / FOR AIR BRAKE
2-1- ENTRATA / INLET
1-2- USCITA / OUTLET



A	84
B	60
C	Ø 54
D	54
E	82
F	60

kit riparazione
repair kit
SB 340 010

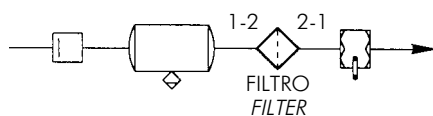


Raccordi filettati M22x1.5 profondità 14.
Thread ports M22x1.5 depth 14.

minima distanza per levare
la cartuccia filtrante
min. distance to remove
the filter

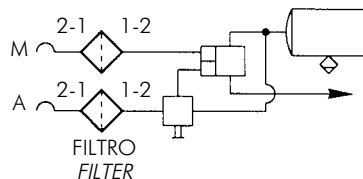
SCHEMI APPLICATIVI / SCHEMES OF APPLICATION

Montaggio su impianto di sospensioni pneumatiche
Installation for air suspension equipments



PER SOSPENSIONE / FOR SUSPENSION
1-2- ENTRATA / INLET
2-1- USCITA / OUTLET

Montaggio su impianto di frenatura
Installation for braking systems



PER FRENATURA / FOR AIR BRAKE
2-1- ENTRATA / INLET
1-2- USCITA / OUTLET

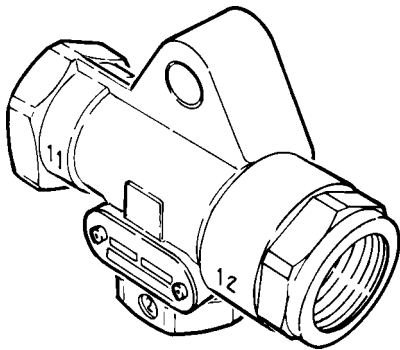
CARATTERISTICHE DI IMPIEGO WORKING DATA

Fluido utilizzato Working medium	ARIA / AIR
Pressione d'esercizio Operating pressure	MAX 12 bar
Temperatura di impiego Working temperature	-40 °C + 80 °C
Passaggio nominale Nominal diameter	Ø 13.5 mm
Massa Weight	Kg 0.230

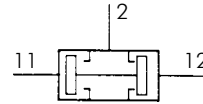
SELETTORE DI CIRCUITO (funzione "AND")
CIRCUIT SELECTOR ("AND" function)

V612

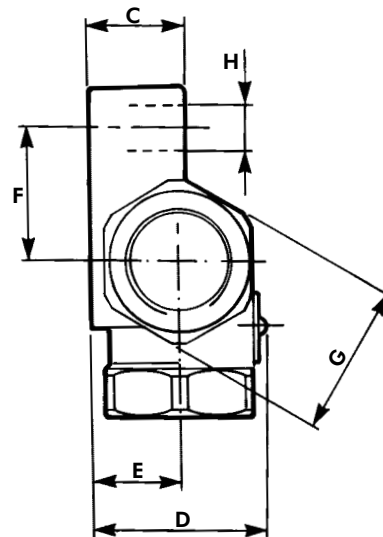
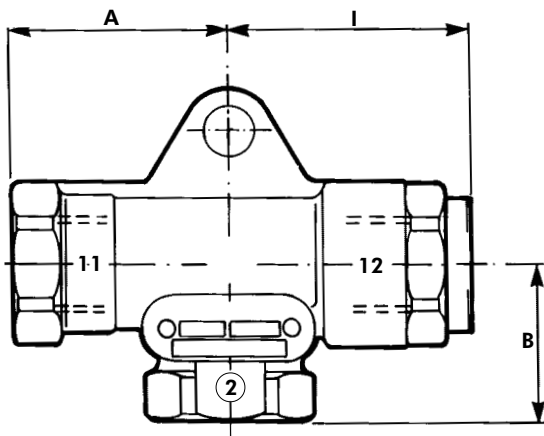
CODICE
 CODE
V612 0100



- 11 - ENTRATA / INLET
- 12 - ENTRATA / INLET
- 2 - USCITA / OUTLET

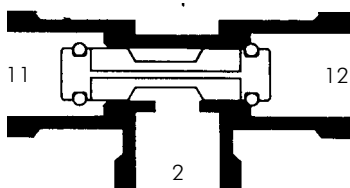


A	43
B	31.5
C	19.5
D	35.5
E	18
F	27
G	ch 30
H	Ø 9
I	47



Raccordi filettati M22x1.5 profondità 14.
 Thread ports M22x1.5 depth 14.

SELETTORE DI CIRCUITO (funzione "AND")
 CIRCUIT SELECTOR ("AND" function)



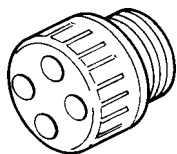
- 11 - ENTRATA / INLET
- 12 - ENTRATA / INLET
- 2 - USCITA / OUTLET

CARATTERISTICHE DI IMPIEGO
WORKING DATA

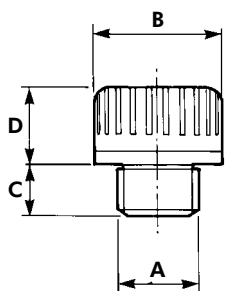
Fluido utilizzato <i>Working medium</i>	ARIA / AIR
Pressione d'esercizio <i>Operating pressure</i>	MAX 10 bar
Temperatura di impiego <i>Working temperature</i>	-40 °C+80 °C
Passaggio nominale <i>Nominal diameter</i>	Ø 12 mm.
Massa <i>Weight</i>	Kg 0.180

VALVOLA PROTEZIONE SCARICO EXHAUST PROTECTION VALVE

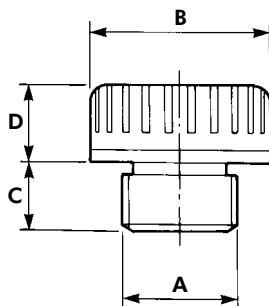
V650



A1



A2 V650 0010



A1

A2

		CODICE CODE V650 0010
A	G1/8"	G1/4"
B	Ø 15	Ø 21
C	6	8
D	9	
Passaggio nominale Nominal diameter	Ø 4.5	Ø 7

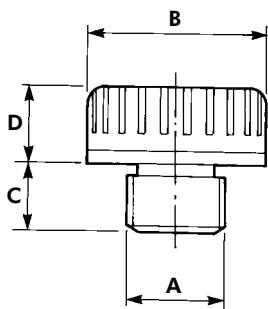
A3

A4

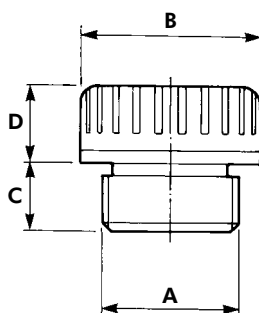
A5

	CODICE CODE V650 0060	CODICE CODE V650 0080	
A	M12x1.5	M16x1.5	M22x1.5
B	Ø 21		Ø 28
C	8		
D	9		
Passaggio nominale Nominal diameter	Ø 5	Ø 9	Ø 14

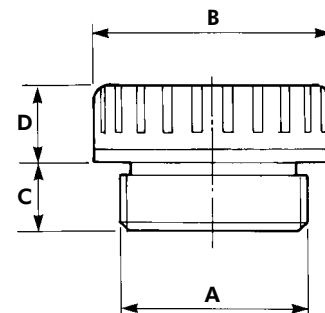
A3 V650 0060



A4 V650 0080



A5



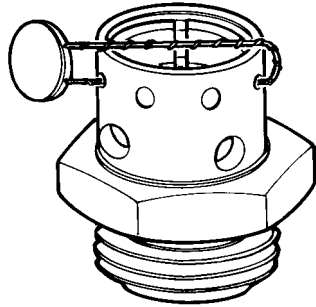
Nota La protezione scarico non è da utilizzarsi sulle valvole installate con lo scarico rivolto verso l'alto.
Note Don't use the exhaust protection on valves fitted with exhaust facing up wards.

CARATTERISTICHE DI IMPIEGO WORKING DATA

Fluido utilizzato Working medium	ARIA / AIR
Pressione d'esercizio Operating pressure	MAX 12 bar
Temperatura di impiego Working temperature	-40 °C+80 °C

V660

VALVOLA DI SICUREZZA SAFETY VALVE

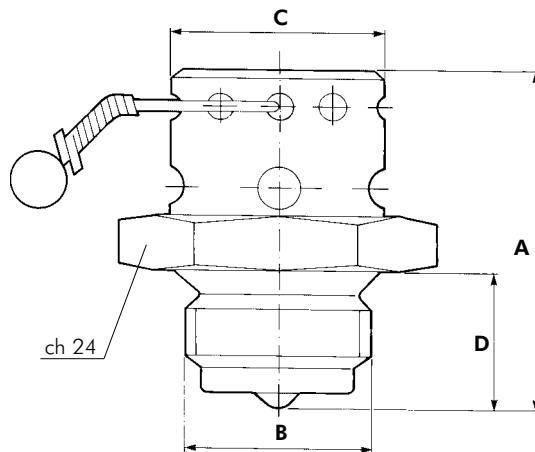


CODICE CODE V660 0001	CODICE CODE V660 0011	CODICE CODE V660 0021
-----------------------------	-----------------------------	-----------------------------

A	30	
B	M16x1.5	
C	Ø 18	
D	12	
tarat. sett. bar	10.5	9.5
		8.5

CODICE CODE V660 0004	CODICE CODE V660 0014	CODICE CODE V660 0024
-----------------------------	-----------------------------	-----------------------------

A	30	
B	M20x1.5	
C	Ø 18	
D	12	
tarat. sett. bar	10.5	9.5
		8.5

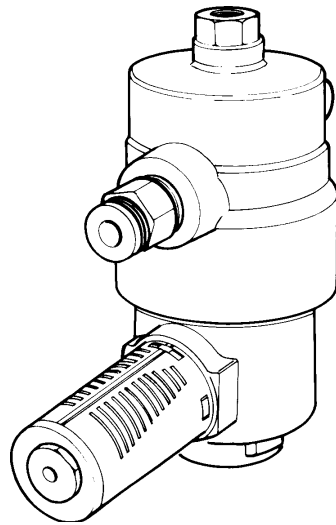


CARATTERISTICHE DI IMPIEGO WORKING DATA

Fluido utilizzato <i>Working medium</i>	ARIA / AIR
Pressione d'esercizio <i>Operating pressure</i>	MAX 20 bar
Temperatura di impiego <i>Working temperature</i>	-40 °C + 80 °C
Massa <i>Weight</i>	Kg 0.030

VALVOLA PER CISTERNE (rompi vuoto)
VACUUM - BREAKER VALVE (for tanker)

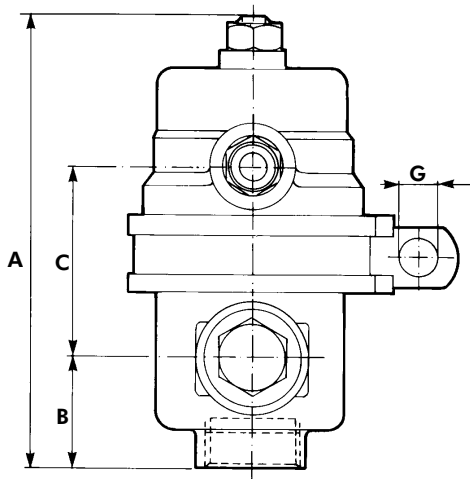
V662



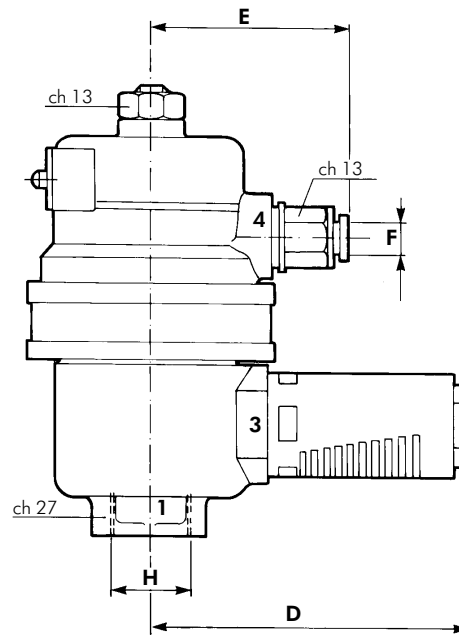
CODICE
 CODE
V662 0000

A	110.5
B	28
C	45
D	75
E	51
F	Ø 6
G	Ø 8.5
H	M22x1.5

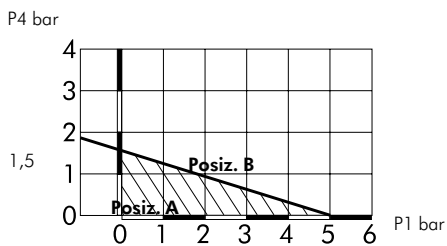
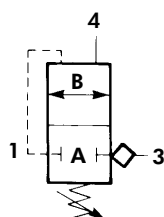
kit riparazione
 repair kit
 SB 340037



Raccordo filettato M22x1.5 profondità 10.
 Thread port M22x1.5 depth 10.



- 1 - ENTRATA
INLET
- 3 - SCARICO
EXHAUST
- 4 - COMANDO
CONTROL LINE

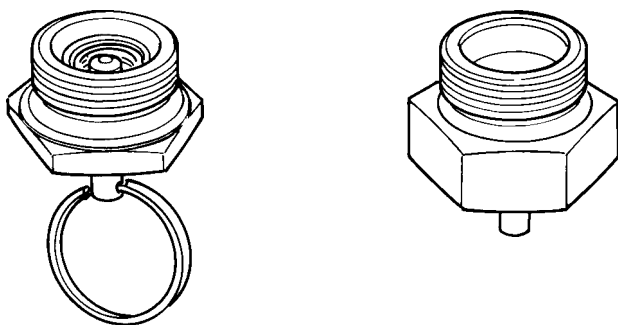


VALORI DI P1 E P4 PER COLLEGARE 1 ALLO SCARICO (3)
 VALUES OF P1 AND P4 TO PUT 1 TO EXHAUST (3)

CARATTERISTICHE DI IMPIEGO
WORKING DATA

Fluido utilizzato Working medium	ARIA / AIR
Pressione d'esercizio Operating pressure	MAX 10 bar
Temperatura di impiego Working temperature	-40 °C + 80 °C
Passaggio nominale Nominal diameter	Ø 10 mm.
Massa Weight	

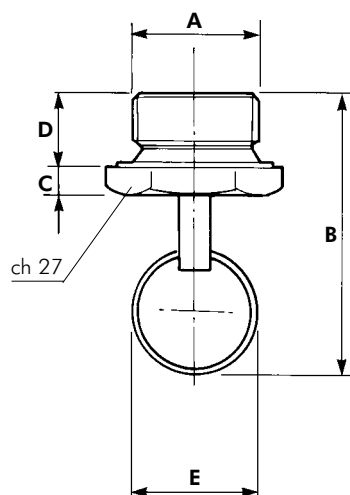
VALVOLA DI SPURGO DRAIN VALVE



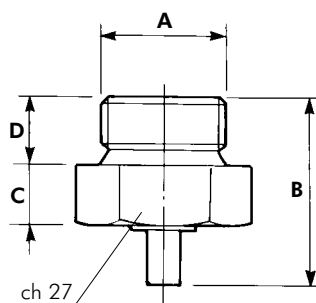
A1	A2
CODICE CODE V680 0000	CODICE CODE V681 0001

A	M22x1.5	
B	56	33
C	6	10.5
D	12	
E	Ø 30	-
Massa Weight Kg	0.050	0.070

A1 V680 0000
MANUALE / MANUAL



A2 V681 0001
AUTOMATICA / AUTOMATIC



PRESSIONE MIN. DI ESERCIZIO
MIN. OPERATING PRESSURE
APERTURA / OPENING = 0.5 bar
CHIUSURA / CLOSED = 1.5 bar

CARATTERISTICHE DI IMPIEGO WORKING DATA

Fluido utilizzato Working medium	ARIA / AIR
Pressione d'esercizio Operating pressure	MAX 14 bar
Temperatura di impiego Working temperature	-40 °C+80 °C