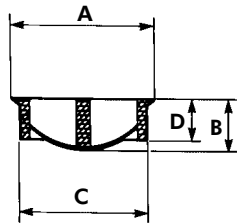
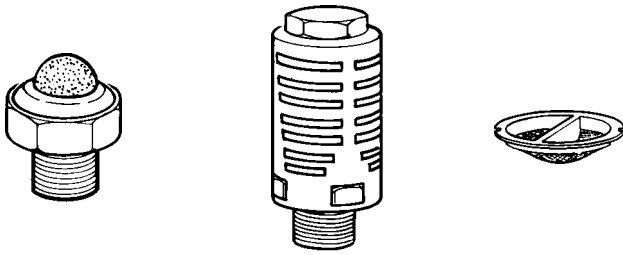
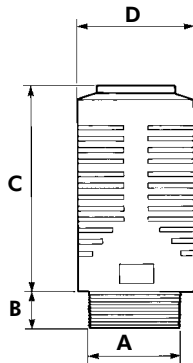


**COMPONENTI / *COMPONENTS***



Materiale : NYLON6.6  
Material : NYLON6.6

	<b>A1</b>	<b>A2</b>	<b>A3</b>	<b>A4</b>
	CODICE CODE FTN 0501	CODICE CODE FTN 0503	CODICE CODE FTN 0505	CODICE CODE FTN 0507
<b>A</b>	M12x1.5	M14x1.5	M16x1.5	M22x1.5
<b>B</b>	3		5.5	6
<b>C</b>	Ø 10	Ø 12	Ø 14	Ø 20
<b>D</b>	-		4	4.5
Massa Weight 100pz.				

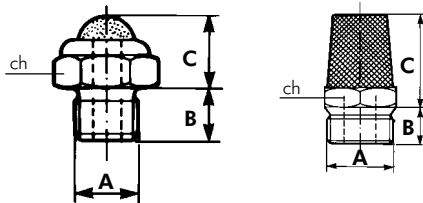


Materiale : RESINA ACETALICA  
Material : ACETAL RESIN

	<b>A5</b>	<b>A6</b>	<b>A7</b>
	CODICE CODE FTN 0001	CODICE CODE FTN 0002	CODICE CODE FTN 0004
<b>A</b>	G1/8"	G1/4"	G1/2"
<b>B</b>	6	-	10
<b>C</b>	28	43	47
<b>D</b>	Ø 15.5	-	Ø 25
Massa Weight 100pz.			

**A8-A9**

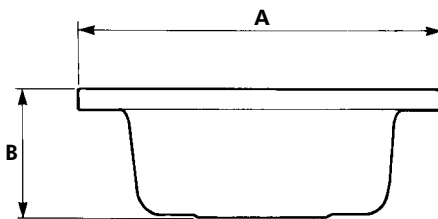
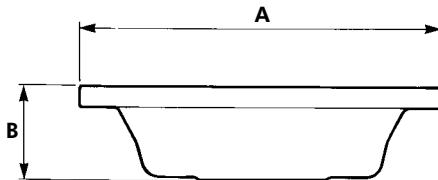
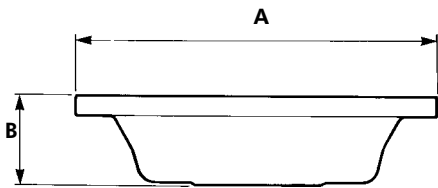
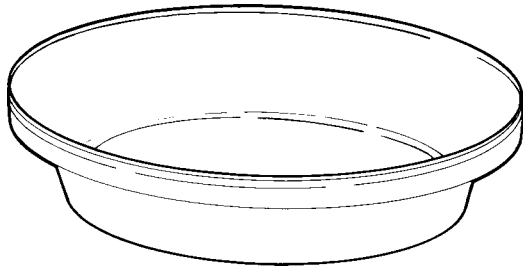
**A10**



Materiale : BRONZO SINTERIZZATO  
Material : SINTERED BRONZE

	<b>A8</b>	<b>A9</b>	<b>A10</b>
	CODICE CODE FTN 0023	CODICE CODE FTN 0025	CODICE CODE FTN 0028
<b>A</b>	M5x0.8	G1/8"	G1/8"
<b>B</b>	4	8	5.5
<b>C</b>	5.5	10	11.5
<b>ch</b>			
Massa Weight 100pz.			

# MEMBRANE PER BRAKE CHAMBER DIAPHRAGM FOR BRAKE CHAMBER



## CORSA CORTA SHORT STROKE

CODICE CODE	A	B	CORSA STROKE	TIPO TYPE
421 900 5	109	32	45	6"
422 900 5	128	34	45	9"
425 900 5	139	34	45	12"
430 900 5	156	34	45	16"
440 900 5	168	34	57	20"
450 900 5	179	34	57	24"
461 900 5	201	38	67	30"
465 900 5	224	44	75	36"

## CORSA MEDIA MEDIUM STROKE

CODICE CODE	A	B	CORSA STROKE	TIPO TYPE
422 900 3	129	36	57	7"
				9"

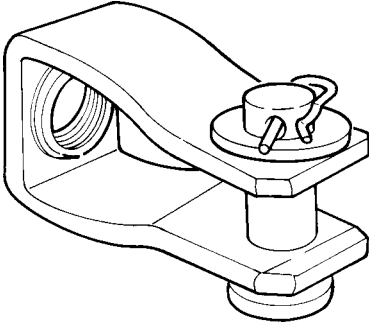
## CORSA LUNGA LONG STROKE

CODICE CODE	A	B	CORSA STROKE	TIPO TYPE
425 900 1	139	50	70	12"
430 900 1	156	50	80	16"
440 900 1	168	50	80	20"
450 900 1	179	50	80	24"
461 900 1	201	50	85	30"

Nota Il valore corsa è riferito alla corsa di impiego della membrana. I dati inseriti nella tabella sono indicati solo per individuare il tipo.  
Note The stroke value is referred to the operating stroke of the diaphragm. Data on the table indicated only to recognize the type.

# 499

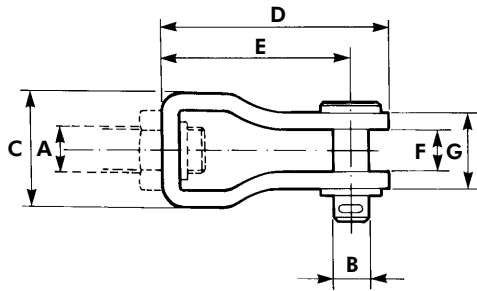
## FORCELLE YOKE



	<b>A1</b>	<b>A2</b>	<b>A3</b>	<b>A4</b>	<b>A5</b>	<b>A6</b>
	CODICE CODE 499 0011	CODICE CODE 499 0012	CODICE CODE 499 0021	CODICE CODE 499 0022	CODICE CODE 499 0031	CODICE CODE 499 0032
<b>A</b>	M16x1.5	M14x1.5	M16x1.5	M14x1.5	M16x1.5	M14x1.5
<b>B</b>	Ø14		assola Ø14		Ø12.5	
<b>C</b>	40					
<b>D</b>	80				80	
<b>E</b>	66				66	
<b>F</b>	14.5 <sup>+0.5</sup> <sub>0</sub>					
<b>G</b>	26.5					
Massa Weight	Kg 0.290		Kg 0.350		Kg 0.280	

**A1** 499 0011  
**A5** 499 0031

**A2** 499 0012  
**A6** 499 0032

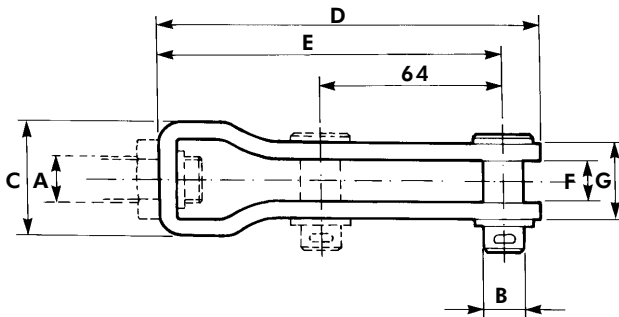


**A7**

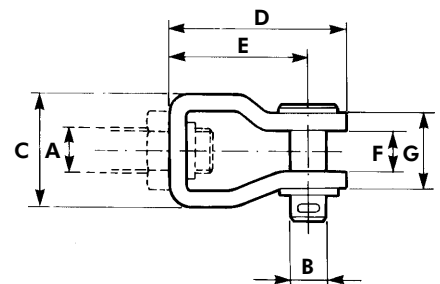
CODICE  
CODE  
499 0061

<b>A</b>	M14x1.5
<b>B</b>	Ø12.5
<b>C</b>	40
<b>D</b>	59
<b>E</b>	45
<b>F</b>	14.5 <sup>+0.5</sup> <sub>0</sub>
<b>G</b>	26.5
Massa Weight	

**A3** 499 0021  
**A4** 499 0022



**A7** 499 0061



CARATTERISTICHE / DATA

Materiale  
Material

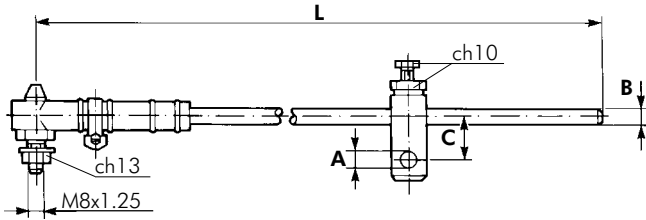
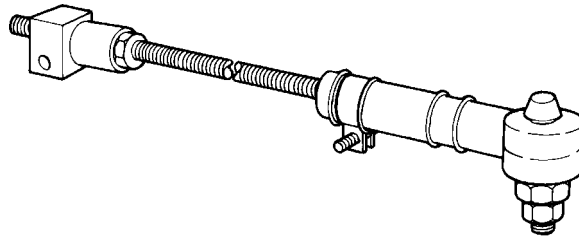
Trattamento superficiale  
Surface treatment

ACCIAIO  
STEEL

ZINCATURA GIALLA  
YELLOW ZINC PLATE

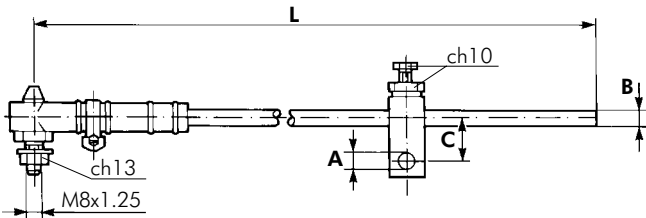
779

**TIRANTI REGISTRABILI  
ADJUSTABLE ROD**



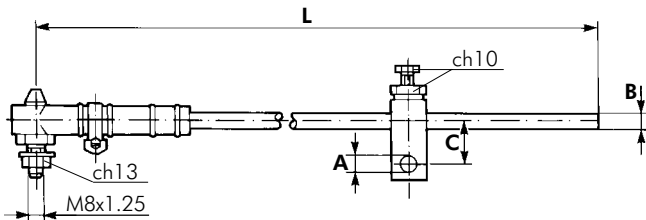
**A1**

CODICE CODE	A	B	C	L	Massa Weight
<b>779 0000</b>	Ø 8	Ø 8	24	260	



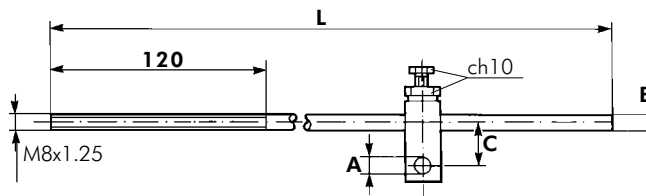
**A2**

CODICE CODE	A	B	C	L	Massa Weight
<b>779 0001</b>	Ø 8	Ø 8	24	650	



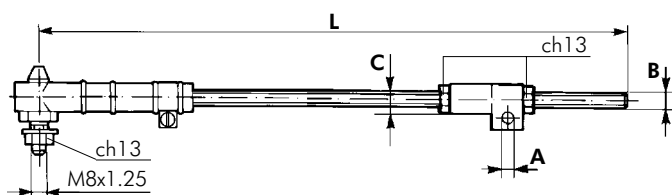
**A3**

CODICE CODE	A	B	C	L	Massa Weight
<b>779 0006</b>	Ø 6	Ø 8	24	260	



**A4**

CODICE CODE	A	B	C	L	Massa Weight
<b>779 0009</b>	Ø 8	Ø 8	24	642	

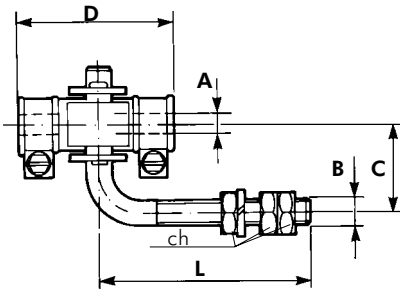


**A5-A6**

CODICE CODE	A	B	C	L	Massa Weight
<b>779 0300</b>	Ø 6	M8x1.25	10	300	
<b>779 0500</b>				500	

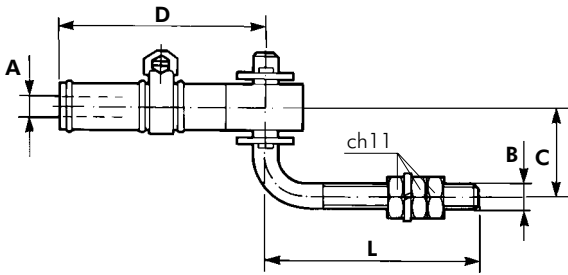
# TIRANTI REGISTRABILI ADJUSTABLE ROD

# 779



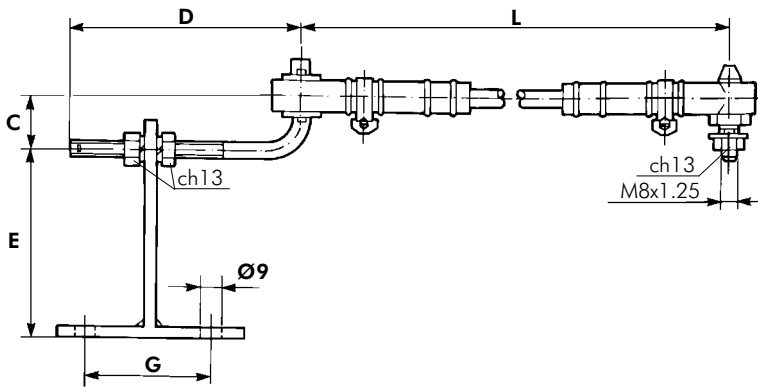
## A7-A8

CODICE CODE	A	B	C	D	L	Massa Weight
779 0020	Ø 6	M8x1.25	27	49	66	
779 0030		M6x1				



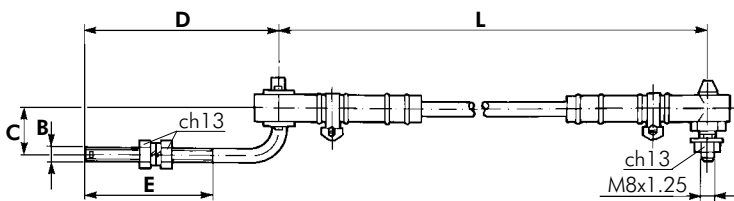
## A9

CODICE CODE	A	B	C	D	L	Massa Weight
779 0025	Ø 6	M8x1.25	27	64	66	



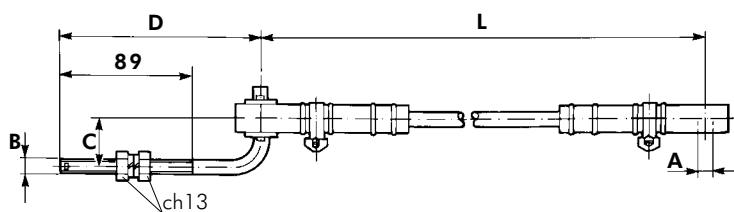
## A10

CODICE CODE	C	D	E	G	L	Massa Weight
779 1000	27	116	92	60	268	



## A11

CODICE CODE	B	C	D	E	L	Massa Weight
779 1001	M8x1.25	27	116	89	268	

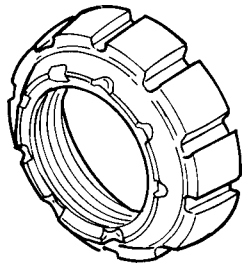


## A12-A13

CODICE CODE	A	B	C	D	L	Massa Weight
779 1002	Ø 8	M8x1.25	27	116	268	
779 1003	Ø 6					

**GHIERA DI BLOC. PER CILINDRO FRENI A CUNEO**  
**LOCKING NUT FOR WEDGE BRAKE ACTUATORS**

779



**A1**

**A2**

**A3**

**A4**

**A7**

CODICE CODE 779 5000	CODICE CODE 779 5001	CODICE CODE 779 5002	CODICE CODE 779 5003	CODICE CODE 779 5011
----------------------------	----------------------------	----------------------------	----------------------------	----------------------------

<b>A</b>	1" 3/4 12 UNS - 2A			
<b>B</b>	Ø 60	Ø 70	Ø 55	Ø 70
<b>C</b>	Ø 50	Ø 56	-	Ø 56
<b>D</b>	16	55	20	55

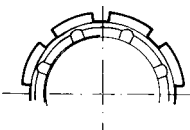
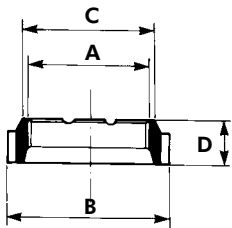
**A5**

**A6**

CODICE CODE 779 5101	CODICE CODE 779 5102
----------------------------	----------------------------

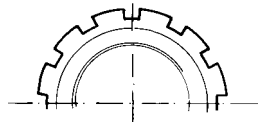
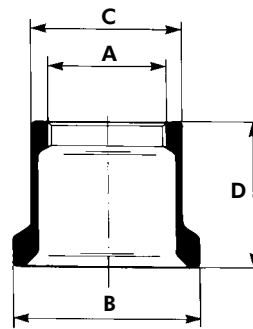
<b>A</b>	M48x2	
<b>B</b>	Ø 80	Ø 58
<b>C</b>	Ø 62	-
<b>D</b>	60	20

**A1** 779 5000



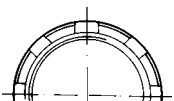
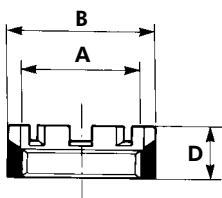
**A2** 779 5001

**A5** 779 5101

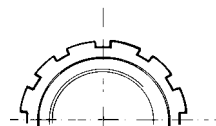
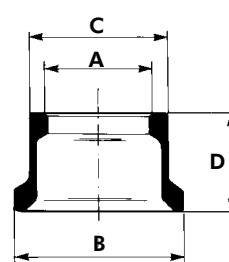


**A3** 779 5002

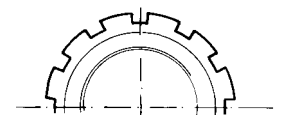
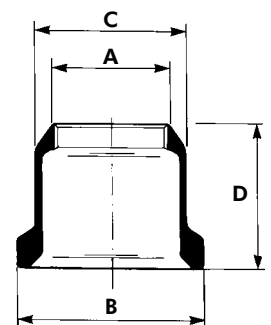
**A6** 779 5102



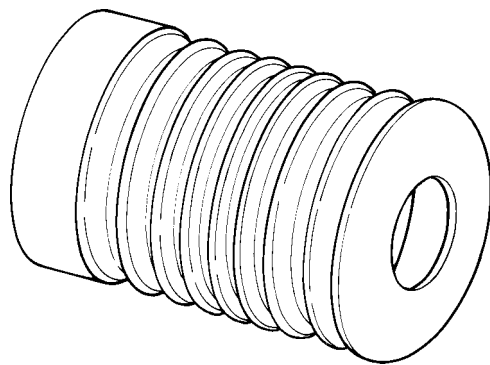
**A4** 779 5003



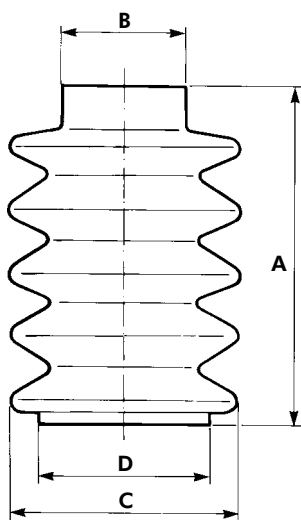
**A7** 779 5011



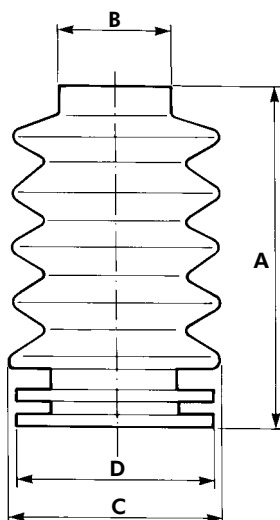
**CUFFIE IN GOMMA**  
**RUBBER COVER**



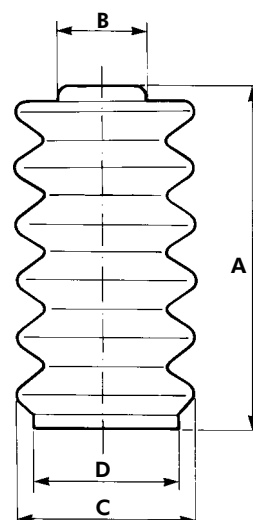
**A1** 8522311



**A2** 8522321



**A3** 8522331

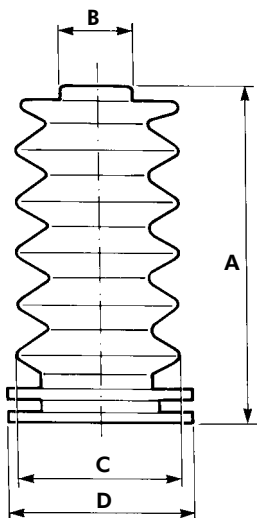


	<b>A1</b>	<b>A2</b>	<b>A3</b>
	CODICE CODE <b>8522311</b>	CODICE CODE <b>8522321</b>	CODICE CODE <b>8522331</b>
<b>A</b>	64	74	72
<b>B</b>	Ø 23	Ø 24	Ø 17
<b>C</b>	Ø 44	Ø 45	Ø 37
<b>D</b>	Ø 32	Ø 43	Ø 31
<b>X1</b>	30	35	30
<b>X2</b>	90	100	95

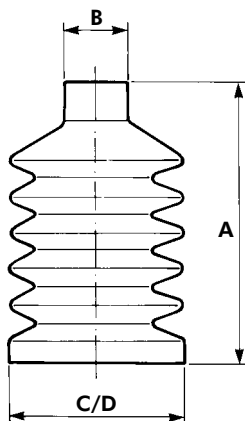
**X1** Schiacciamento massimo - Max. stroke  
**X2** Estensione massima - Max. extension

# CUFFIE IN GOMMA RUBBER COVER

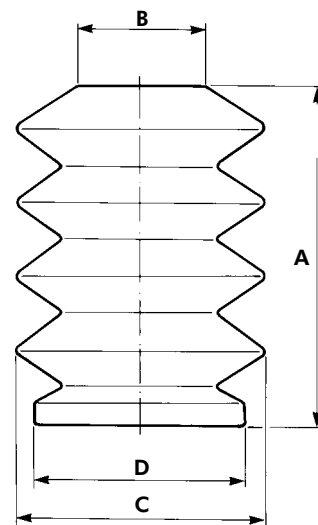
**A4** 8522341



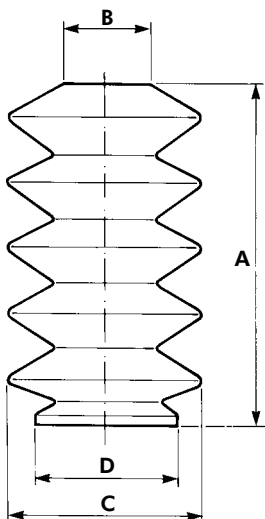
**A5** 8522351



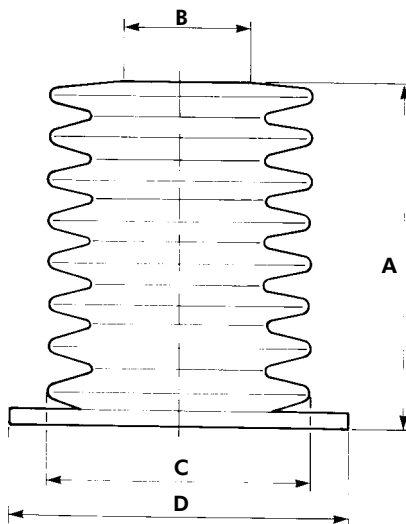
**A6** 8522551



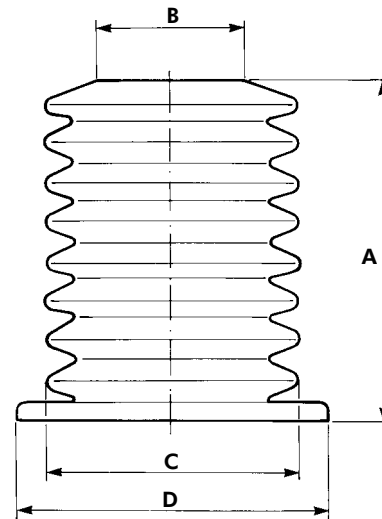
**A7** 8522561



**A8** 8522801



**A9** 8522841

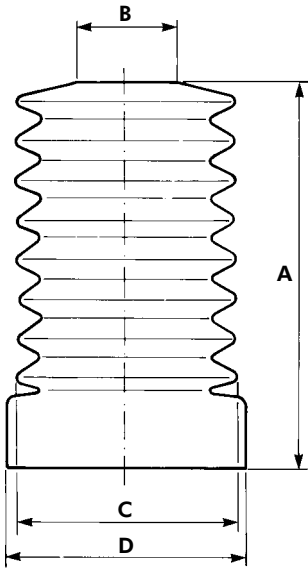


	<b>A4</b>	<b>A5</b>	<b>A6</b>	<b>A7</b>	<b>A8</b>	<b>A9</b>
<b>CODICE</b>	8522341	8522351	8522551	8522561	8522801	8522841
<b>CODE</b>	8522341	8522351	8522551	8522561	8522801	8522841
<b>A</b>	80	78	136	142	64	63
<b>B</b>	Ø 16	Ø 17	Ø 45	Ø 30	Ø 20	
<b>C</b>	Ø 38	Ø 48	Ø 100	Ø 82	Ø 51	Ø 45
<b>D</b>	Ø 43	Ø 48	Ø 85	Ø 60	Ø 64	Ø 54
<b>X1</b>	40	35	40		30	
<b>X2</b>	100		180		110	

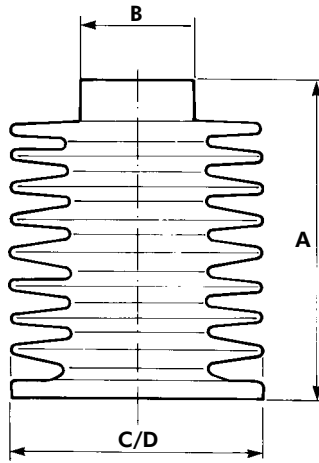
**X1** Schiacciamento massimo - Max. stroke  
**X2** Estensione massima - Max. extension

# CUFFIE IN GOMMA RUBBER COVER

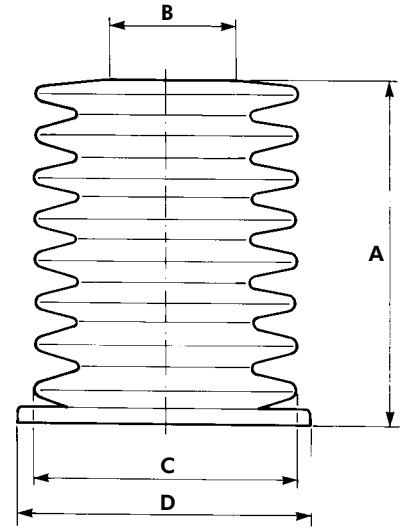
**A10** 8522821



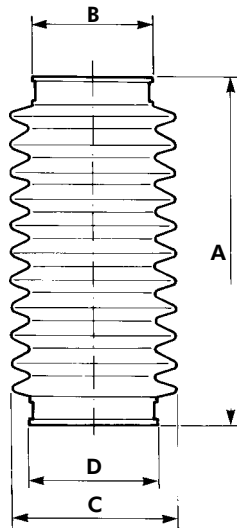
**A11** 8522831



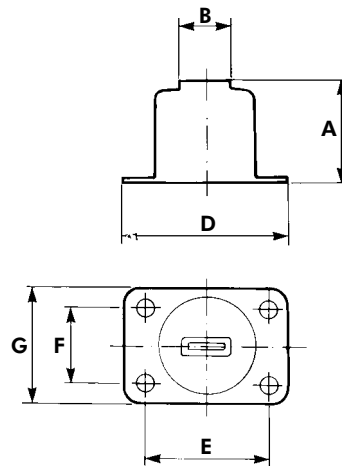
**A12** 8522811



**A13** 8523051



**A14** 8523091

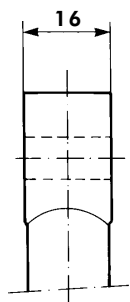
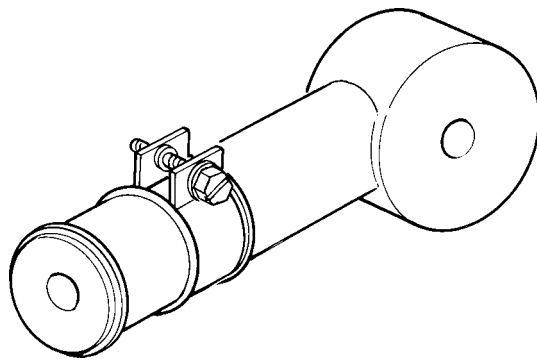


	<b>A10</b>	<b>A11</b>	<b>A12</b>	<b>A13</b>
	<b>CODICE CODE 8522821</b>	<b>CODICE CODE 8522831</b>	<b>CODICE CODE 8522811</b>	<b>CODICE CODE 8523051</b>
<b>A</b>	76	68	66	124
<b>B</b>	∅ 18	∅ 24	∅ 20	∅ 43
<b>C</b>	∅ 45	∅ 54	∅ 51	∅ 60
<b>D</b>	∅ 48	∅ 54	∅ 54	∅ 47
<b>X1</b>	35	40	30	60
<b>X2</b>	120	140	115	180

	<b>A14</b>
	<b>CODICE CODE 8523091</b>
<b>A</b>	33
<b>B</b>	∅ 16
<b>D</b>	∅ 54
<b>E</b>	40
<b>F</b>	25
<b>G</b>	38

**X1** Schiacciamento massimo - Max. stroke  
**X2** Estensione massima - Max. extension

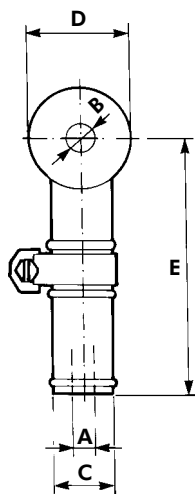
# AMMORTIZZATORI IN GOMMA RUBBER SHOCK - ABSORBERS



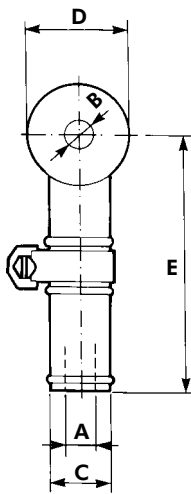
	<b>A1</b>	<b>A2</b>	<b>A3</b>	<b>A4</b>
<b>CODICE CODE</b>	<b>8524003</b>	<b>8524007</b>	<b>8524009</b>	<b>8524010</b>
<b>A</b>	Ø 6	Ø 8	Ø 6	Ø 6
<b>B</b>	Ø 6		Ø 8	Ø 6
<b>C</b>	Ø 15.5		Ø 16	
<b>D</b>	Ø 24.5		Ø 10	
<b>E</b>	64		49	

A - B diametro asta - tirante

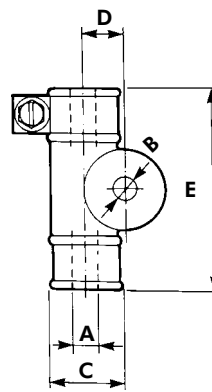
**A1** 8524003



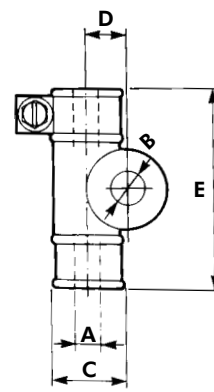
**A2** 8524007



**A3** 8524009



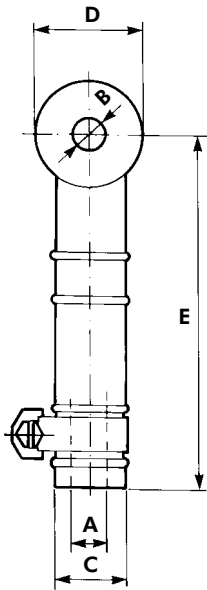
**A4** 8524010



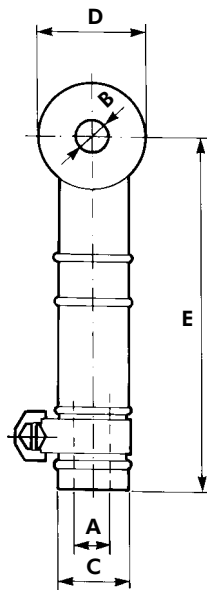
Con rinforzo interno metallico.  
With internal metallic support.

# AMMORTIZZATORI IN GOMMA RUBBER SHOCK - ABSORBERS

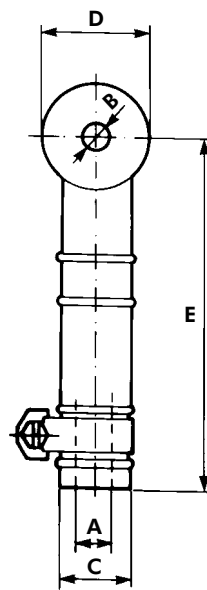
**A5** 8524001



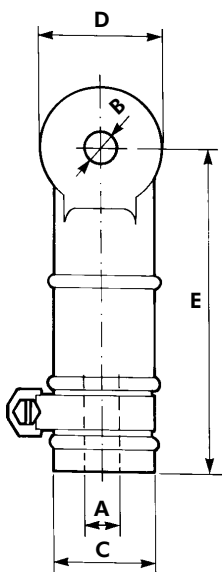
**A6** 8524021



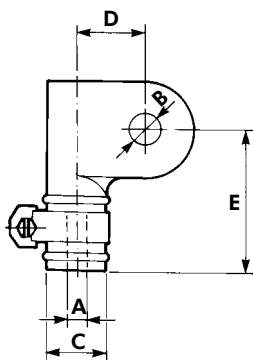
**A7** 8524005



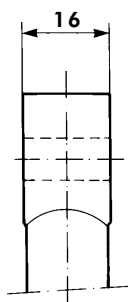
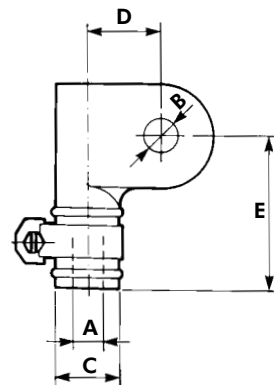
**A8** 8524002



**A9** 8524004



**A10** 8524006

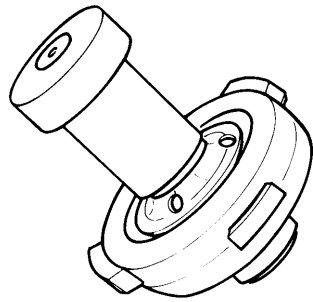


	<b>A5</b>	<b>A6</b>	<b>A7</b>	<b>A8</b>	<b>A9</b>	<b>A10</b>
	CODICE CODE 8524001	CODICE CODE 8524021	CODICE CODE 8524005	CODICE CODE 8524002	CODICE CODE 8524004	CODICE CODE 8524006
<b>A</b>	Ø 8	Ø 8	Ø 8	Ø 8	Ø 8	Ø 6
<b>B</b>	Ø 8	Ø 6	Ø 8	Ø 8		
<b>C</b>	Ø 15.5	Ø 15.5	Ø 22.5	Ø 16		
<b>D</b>	Ø 24.5	Ø 24.5	Ø 27.5	18	16	
<b>E</b>	80	80	75	37.5		

A - B diametro asta - tirante

# 855

## VALVOLE CON PREIMMISSIONE INLET / EXHAUST VALVE



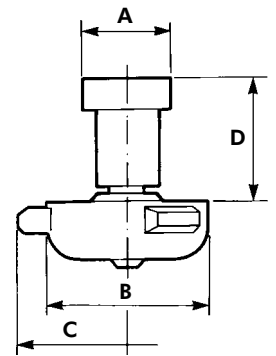
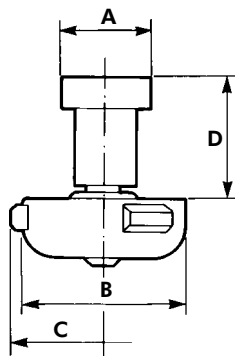
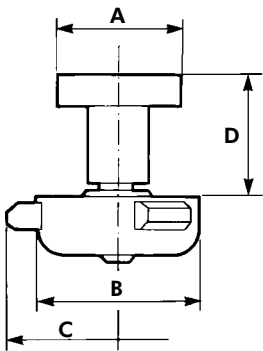
### CARATTERISTICHE DI IMPIEGO WORKING DATA

Fluido utilizzato <i>Working medium</i>	ARIA / AIR
Pressione d'esercizio <i>Operating pressure</i>	MAX 12 bar
Temperatura di impiego <i>Working temperature</i>	-40 °C+80 °C
Massa per 100 pz. <i>Weight for 100 pz.</i>	Kg 1.700

**A1** 8550 101  
preimmissione / pre-inlet Ø 10

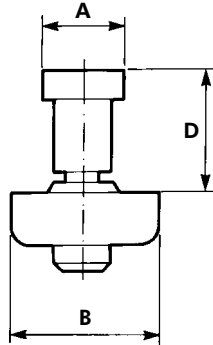
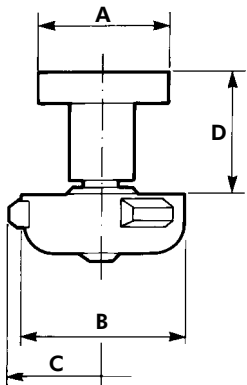
**A2** 8550 201  
preimmissione / pre-inlet Ø 10

**A3** 8550 301  
preimmissione / pre-inlet Ø 10



**A4** 8550 401  
preimmissione / pre-inlet Ø 10

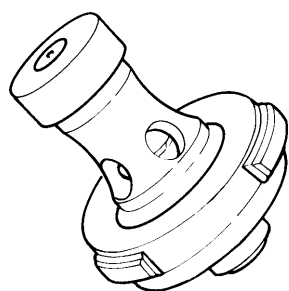
**A5** 8550 501  
preimmissione / pre-inlet Ø 10



	<b>A1</b>	<b>A2</b>	<b>A3</b>	<b>A4</b>	<b>A5</b>
<b>CODICE CODE</b>	<b>8550 101</b>	<b>8550 201</b>	<b>8550 301</b>	<b>8550 401</b>	<b>8550 501</b>
<b>A</b>	Ø 20	Ø 14	Ø 20	Ø 14	
<b>B</b>	Ø 26				Ø 25.5
<b>C</b>	Ø 34	Ø 29.5	Ø 34	Ø 29.5	-
<b>D</b>	20				

# VALVOLE CON PREIMMISSIONE INLET / EXHAUST VALVE

# 855

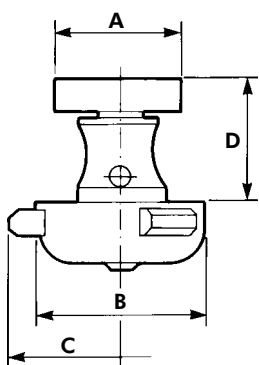


## CARATTERISTICHE DI IMPIEGO WORKING DATA

Fluido utilizzato <i>Working medium</i>	ARIA / AIR
Pressione d'esercizio <i>Operating pressure</i>	MAX 12 bar
Temperatura di impiego <i>Working temperature</i>	-40 °C+80 °C
Massa per 100 pz. <i>Weight for 100 pz.</i>	Kg 1.700

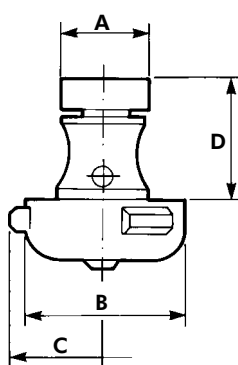
### A6 8551 101

preimmissione / pre-inlet Ø 10



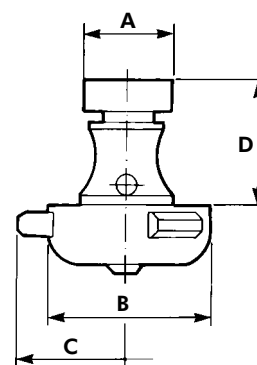
### A7 8551 201

preimmissione / pre-inlet Ø 10



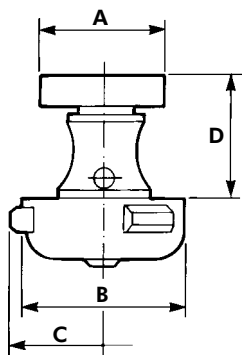
### A8 8551 301

preimmissione / pre-inlet Ø 10



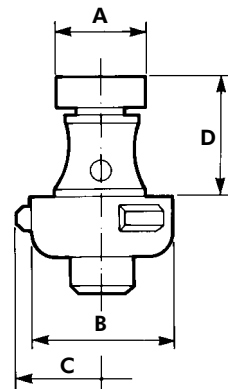
### A9 8551 401

preimmissione / pre-inlet Ø 10



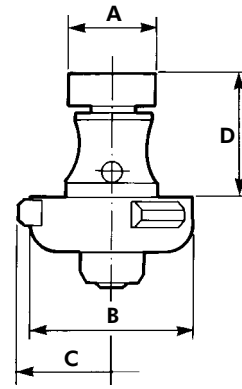
### A10 8551 601

preimmissione / pre-inlet Ø 10



### A11 8551 701

preimmissione / pre-inlet Ø 7



### A6

### A7

### A8

### A9

### A10

### A11

CODICE  
CODE  
8551 101

CODICE  
CODE  
8551 201

CODICE  
CODE  
8551 301

CODICE  
CODE  
8551 401

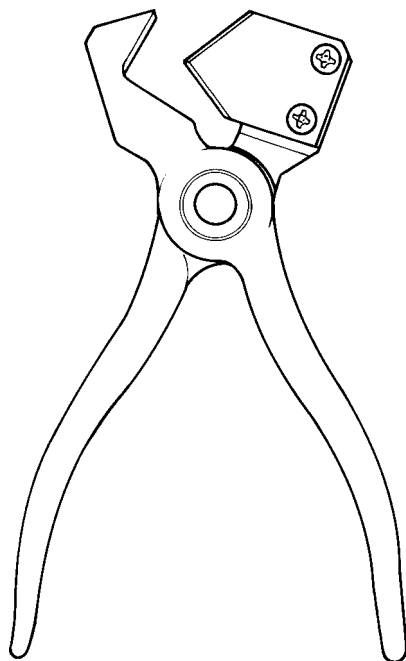
CODICE  
CODE  
8551 601

CODICE  
CODE  
8551 701

A	Ø 20	Ø 14	Ø 20	Ø 14	
B	Ø 26			Ø 23	Ø 26
C	Ø 34	Ø 29.5	Ø 34	Ø 29.5	Ø 29
D	20				

**PINZA TRANCIATUBI FLESSIBILE**  
**FLEXIBLE PIPE CUTTER**

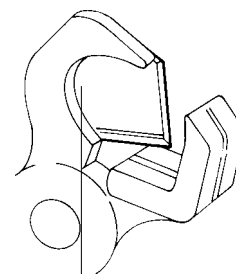
**TTF**



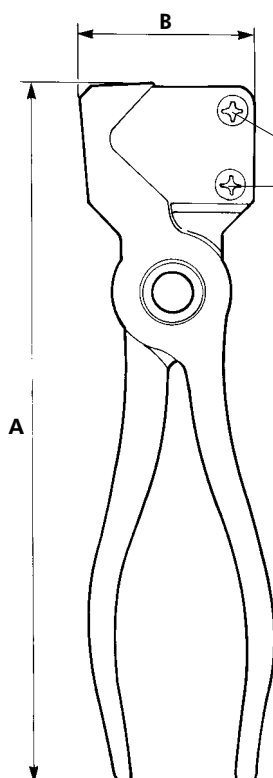
CODICE  
 CODE  
**TTF 0002**

<b>A</b>	184
<b>B</b>	46/84
<b>C</b>	12.5
Massa Weight	Kg 0.300

Attrezzo adatto per tagliare correttamente i tubi in POLIAMMIDE fino a Ø 24.  
 Tool suitable to cut polyamide pipes up to Ø 24.



LAMA DI RICAMBIO  
 REPLACEMENT BLADE  
 CODICE / CODE  
 TTF 9003



Viti per la sostituzione  
 della lama.  
 Screw for replacement  
 of the blade.

CARATTERISTICHE  
 DATA

Materiale Material	corpo in zama pressofuso lama in acciaio zinc casting body steel blade
Trattamento superficiale Surface treatment	cromatura a spessore chromium - plating