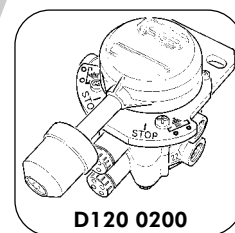
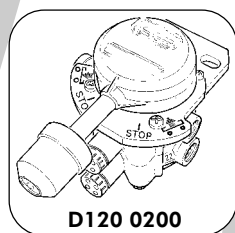
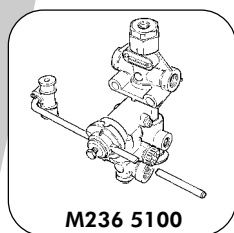
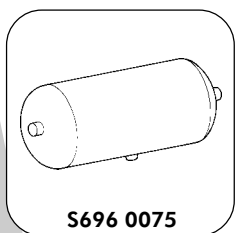
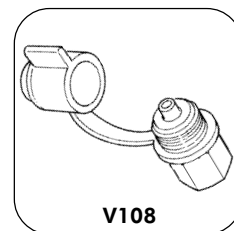
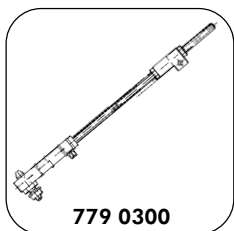
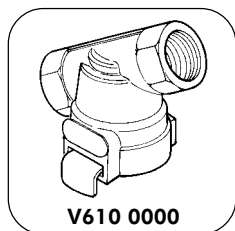


IMPIANTI SOSPENSIONI E COLLEGAMENTI PNEUMATICI
SYSTEM OF AIR SUSPENSIONS AND PNUMATIC CONNECTIONS

IMPIANTO SOSPENSIONI PNEUMATICHE rimorchio 3 assi fissi
AIR SUSPENSION SYSTEM 3 axles trailer

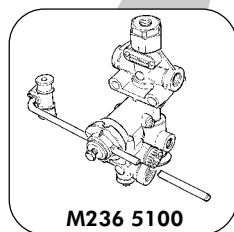
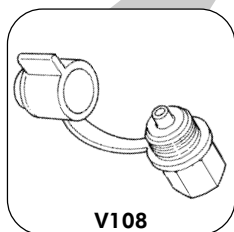
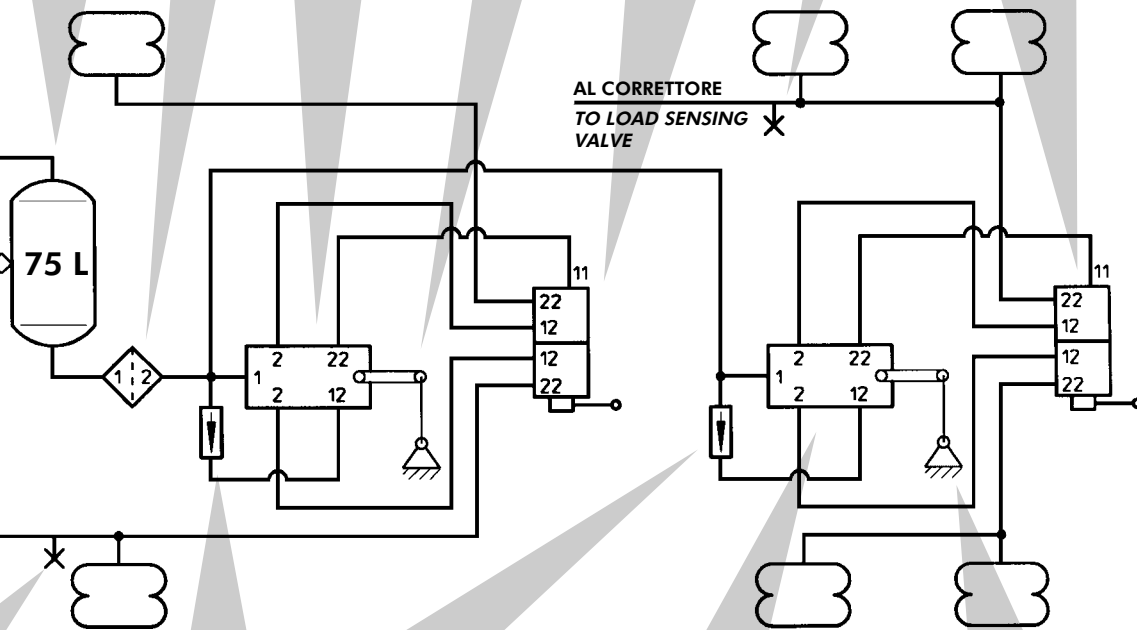
NUMERO KIT (*)
SB 301001



DAL SERBATOIO
 FRENI
 FROM BRAKE
 RESERVOIR

AL CORRETTORE
 TO LOAD SENSING
 VALVE

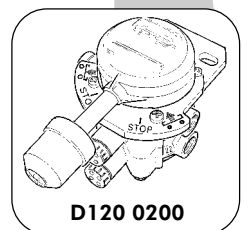
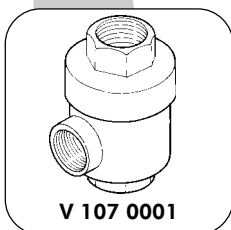
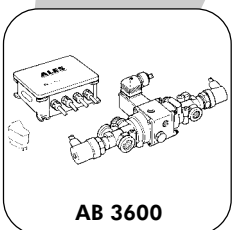
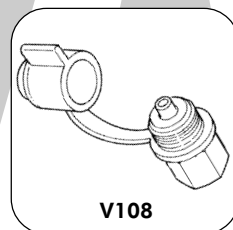
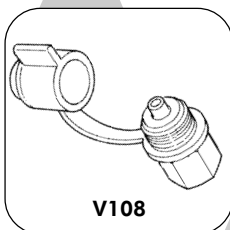
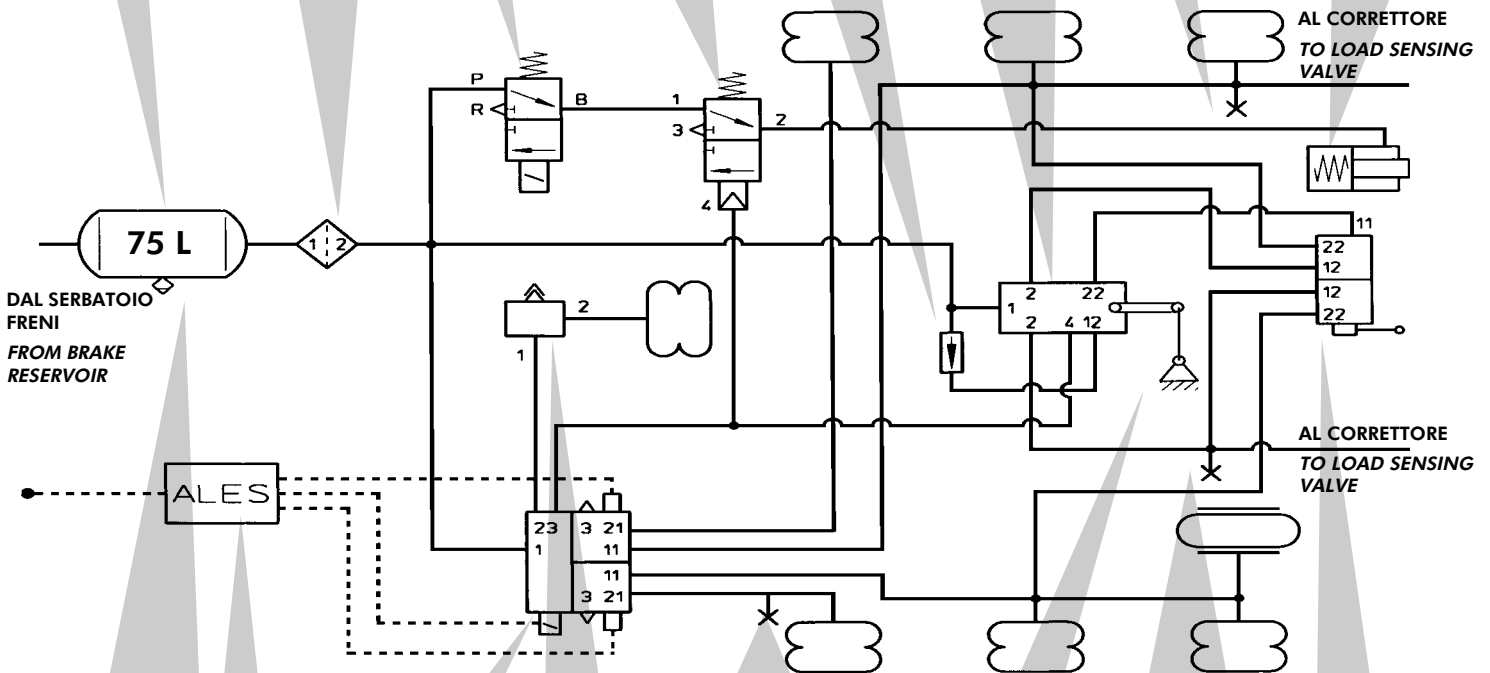
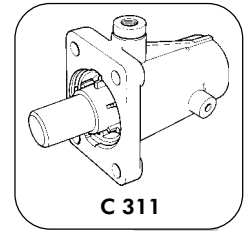
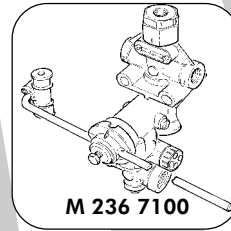
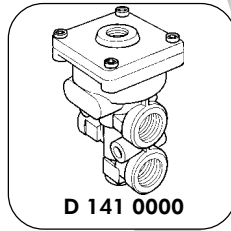
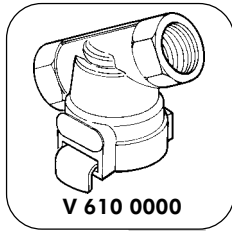
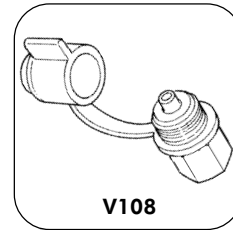
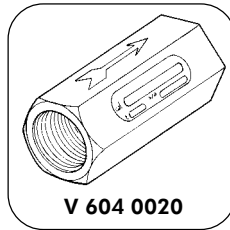
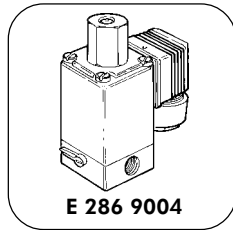
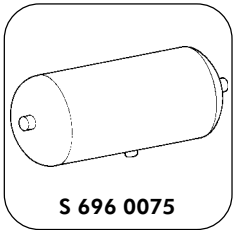
AL CORRETTORE
 TO LOAD SENSING
 VALVE



(*) Il numero SB301001 è solo un riferimento, NON è un codice d'ordine.
 The number SB301001 is NOT an order code but a reference only.

IMPIANTO SOSPENSIONI PNEUMATICHE semirimorchio 3 assi con ALES
AIR SUSPENSION SYSTEM 3 axles semi-trailer with ALES

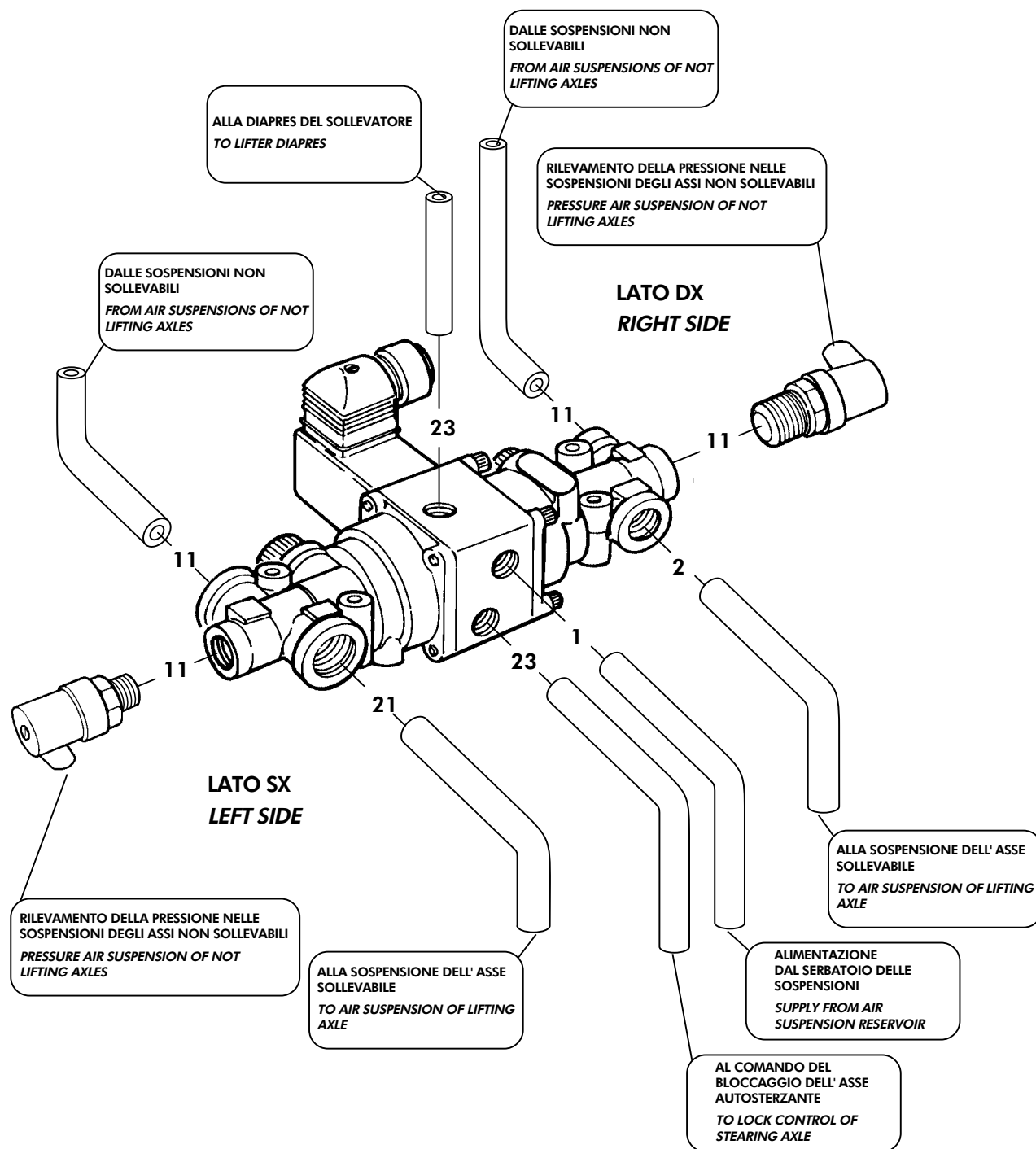
NUMERO KIT (*)
SB 303006



(*) Il numero SB303006 è solo un riferimento, NON è un codice d'ordine.
 The number SB303006 is NOT an order code but a reference only.

CODICE / CODE
D 1410250

COLLEGAMENTI PNEUMATICI Deviatore a 2 sezioni con comando elettropneumatico
PNEUMATIC CONNECTING PORTS Double one-way valve with electropneumatic control



IMPIEGO

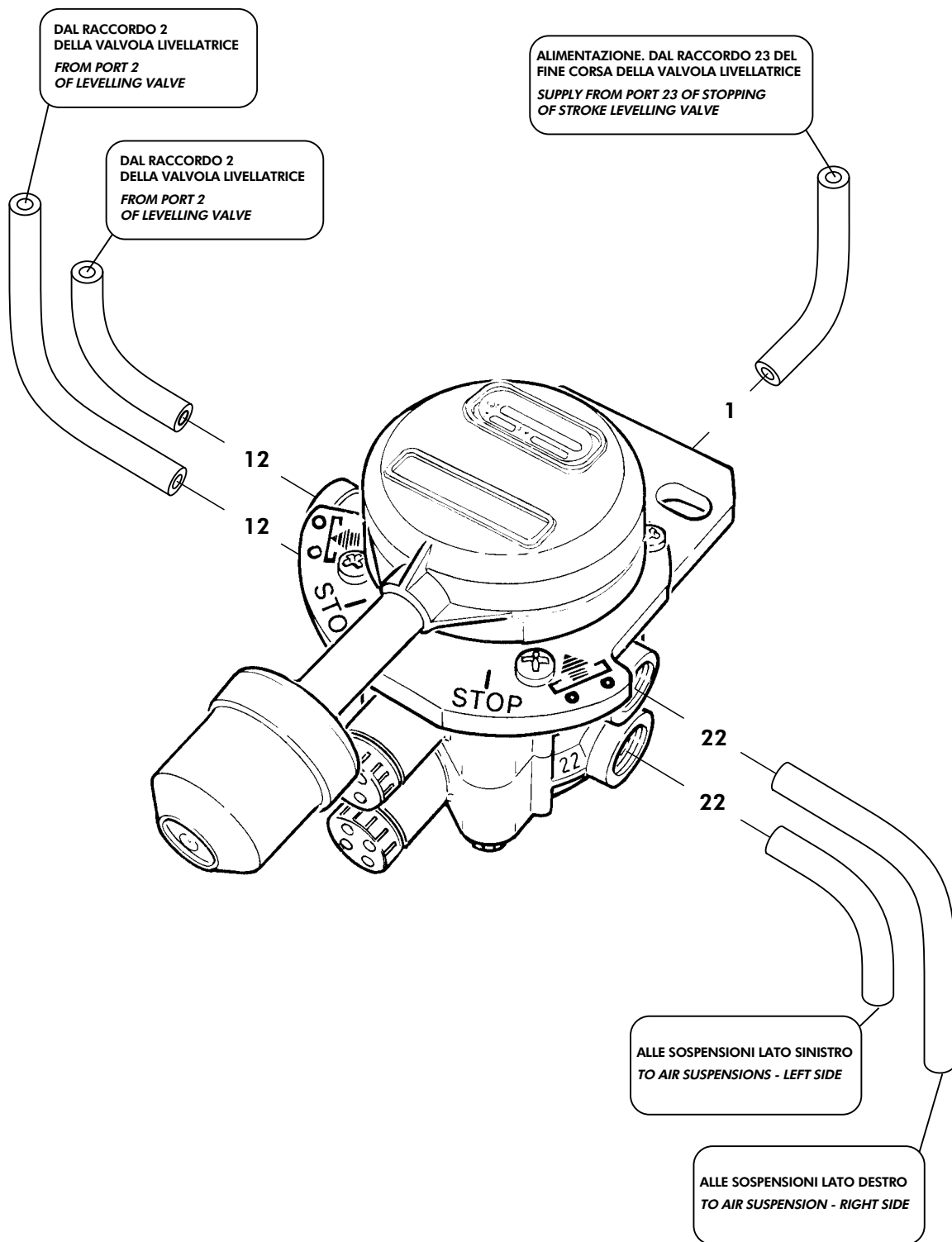
Il dispositivo ALES inserito nell' impianto delle sospensioni pneumatiche consente il sollevamento dell'asse automaticamente al valore di pressione stabilito.

USE

The ALES device installed in the air-spring suspension system enables the axle to be lifted automatically at the preset pressure value.

COLLEGAMENTI PNEUMATICI valvola alza - abbassa 2 sezioni
PNEUMATIC CONNECTIONS of 2 sections raise - lower valve

CODICE / CODE
D 1200200



IMPIEGO

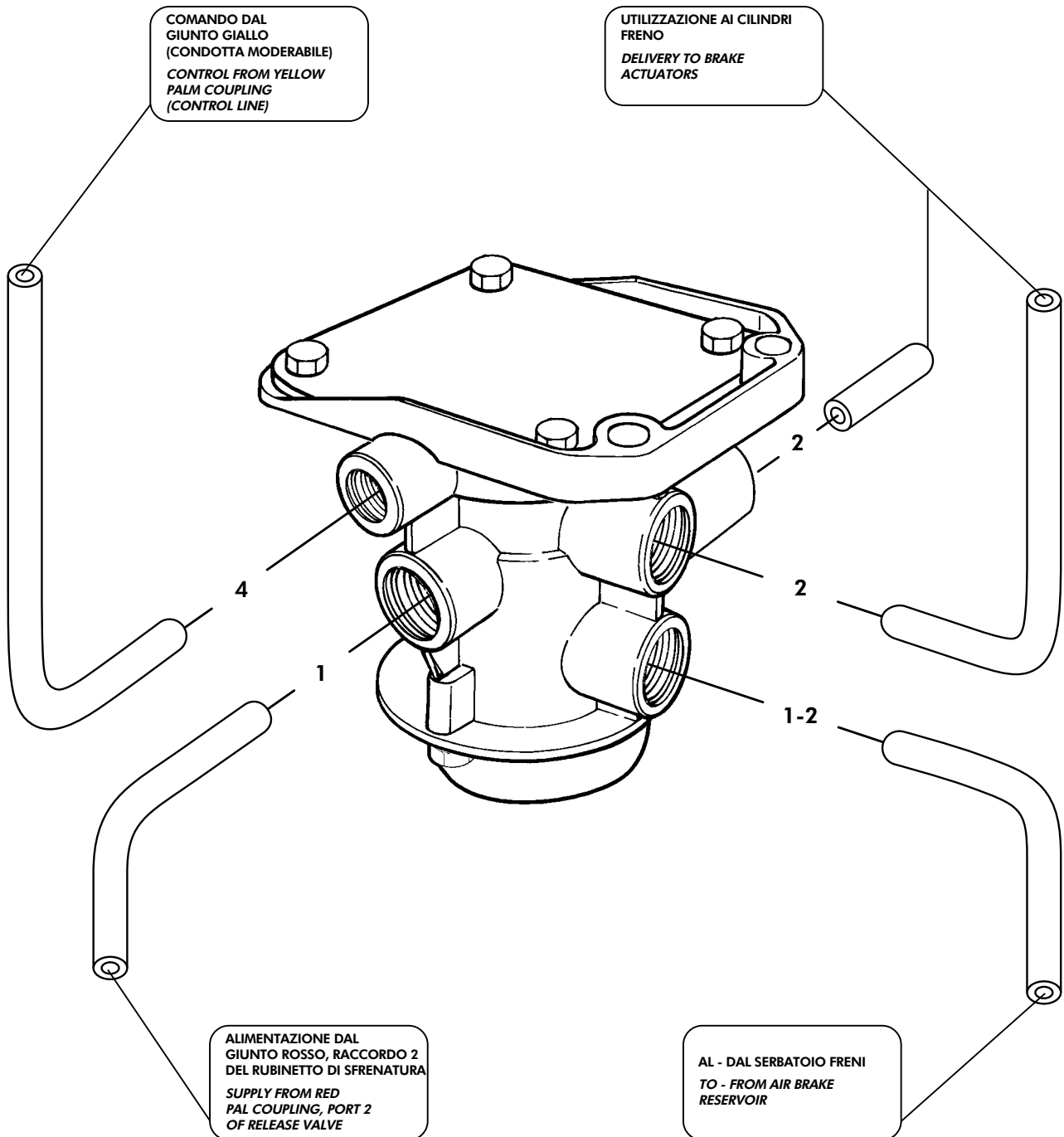
L' apparecchio inserito tra la valvola livellatrice e le sospensioni pneumatiche consente, tramite una leva di comando manuale, di alzare o abbassare il telaio del veicolo all' altezza voluta.

USE

This valve, installed between the levelling valve and the air suspensions, allows to raise or lower the chassis at the expected level, operating on a hand lever.

CODICE / CODE
D 1810000

COLLEGAMENTI PNEUMATICI servoautodistributore
PNEUMATIC CONNECTIONS relay emergency valve

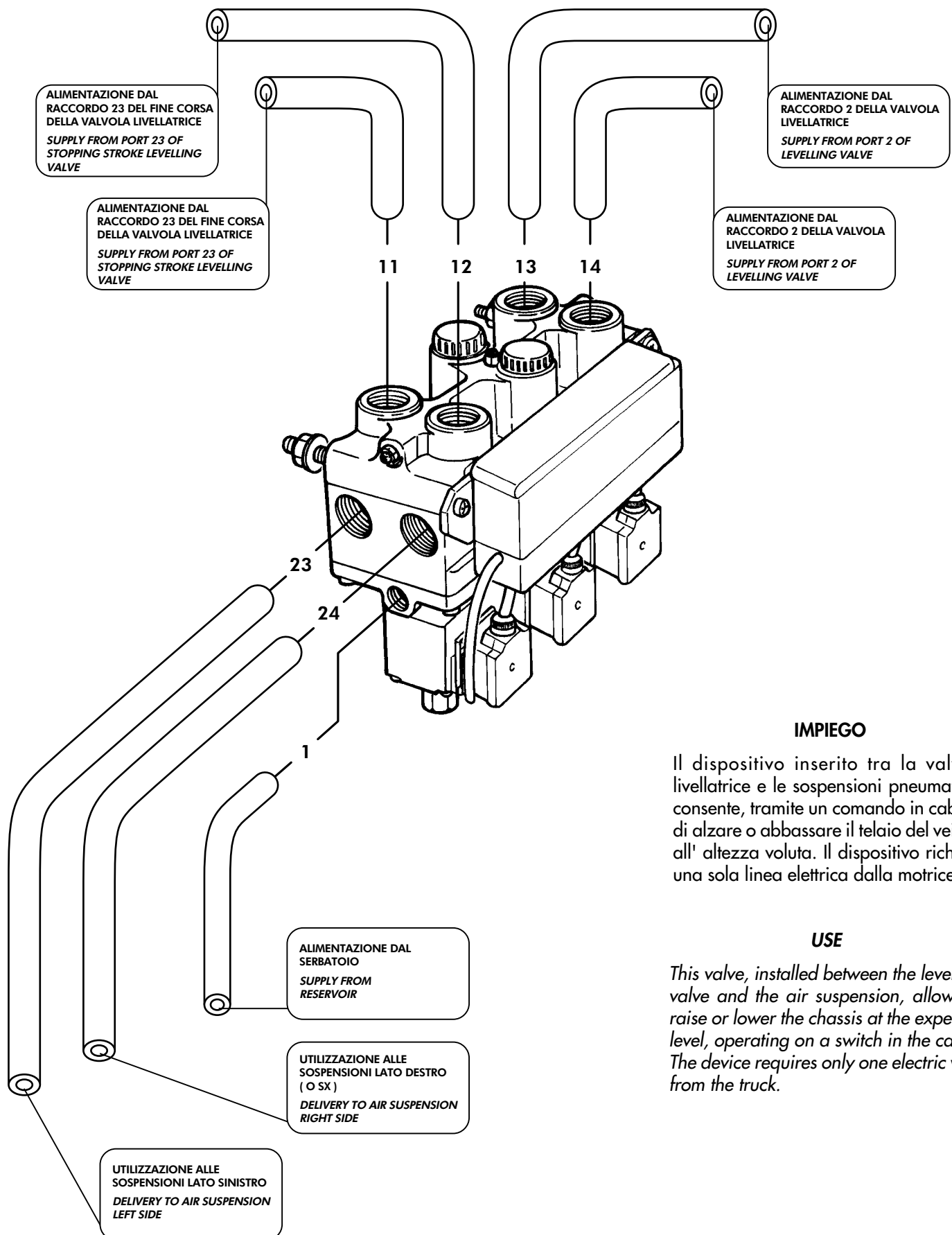


IMPIEGO

L'apparecchio, montato sull'impianto freni di veicoli rimorchiati, connesso alla motrice tramite le due condotte pneumatiche di alimentazione e di comando, controlla la frenatura di servizio, l'alimentazione del serbatoio del rimorchio e realizza la frenatura automatica in caso di perdita dell'alimentazione dalla motrice.

USE

This valve is used in towed vehicles braking system. It is connected with the truck through the "supply-line" and the "control-line". It controls the service braking and the reservoir charge. The valve guarantees the automatic braking in case of damaging of the supply line.



IMPIEGO

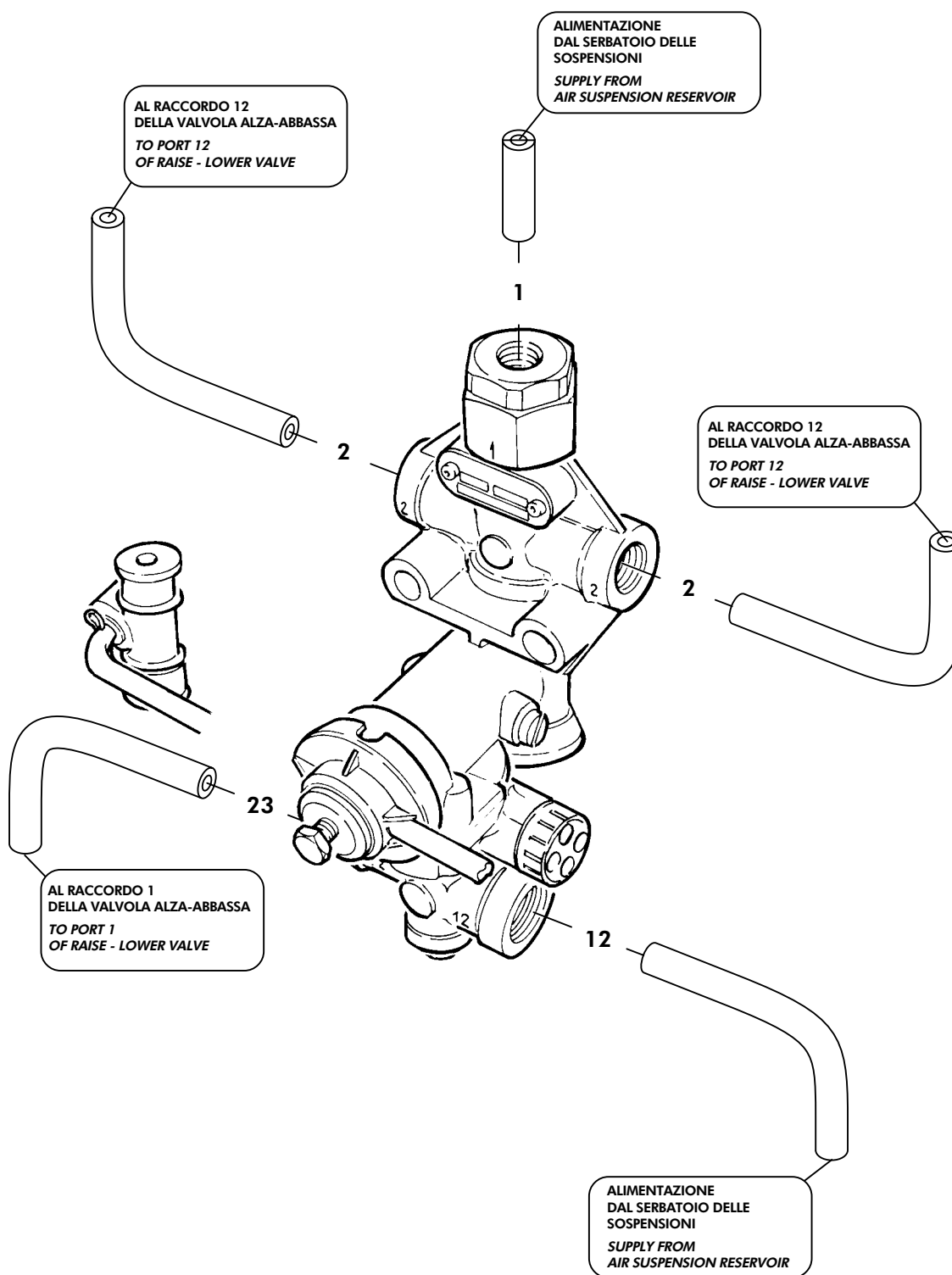
Il dispositivo inserito tra la valvola livellatrice e le sospensioni pneumatiche consente, tramite un comando in cabina, di alzare o abbassare il telaio del veicolo all' altezza voluta. Il dispositivo richiede una sola linea elettrica dalla motrice.

USE

This valve, installed between the levelling valve and the air suspension, allows to raise or lower the chassis at the expected level, operating on a switch in the cabin. The device requires only one electric wire from the truck.

CODICE / CODE
M 2365100

COLLEGAMENTI PNEUMATICI valvola livellatrice con fine corsa
PNEUMATIC CONNECTIONS of levelling valve with stopping stroke



IMPIEGO

L' apparecchio mantiene costante il livello del telaio, regolando la pressione nelle sospensioni, in funzione del carico sul veicolo.

- La funzione della variazione dal punto neutro, permette di posizionare il telaio su un livello più alto.
- La funzione del fine corsa limita il sollevamento massimo del telaio, impedendo di danneggiare le sospensioni.

USE

This device ensures that the chassis is kept level at all times by adjusting the pressure on the suspension depending on the load carried by the vehicle.

- The modification of neutral position allows to adjust the chassis at a higher level.
- The stopping stroke function limit the maximum height of chassis avoiding suspension damages.